

AXIS S2208 Mk II Standalone Appliance

All-in-one recording solution with integrated PoE switch

This all-in-one standalone appliance for up to eight video channels is silent and won't disturb local operations. It includes eight AXIS Camera Station Pro licenses, a PoE switch, and 4 TB storage. It also offers flexible storage options and supports AI applications such as Smart Search 2. It's easy to expand your system using AXIS S30 Recorder Series for additional channels, PoE, and storage. It's preloaded with software and tools to help you set up and maintain your system. For instance, AXIS Recorder Toolbox and its intuitive installation wizard. Furthermore, it offers high-security features and standards such as FIPS 140-2 Level 2 certified TPM.

- > [All-in-one solution with integrated PoE switch](#)
- > [8 AXIS Camera Station Pro licenses included](#)
- > [Silent - won't disturb operations](#)
- > [Advance Replacement Service and 5-year hardware warranty](#)
- > [High cybersecurity features and standards](#)



AXIS S2208 Mk II Standalone Appliance

Licenses	8 AXIS Camera Station Pro Core Device NVR licenses included and tied to the hardware. Can be upgraded with additional licenses (sold separately).
System scalability	Qualified for up to 8 video channels and 16 doors simultaneously with a total recording rate up to 128 Mbps. Can be scaled with more devices when using AXIS S30 Recorder Series. Qualified for up to 1,000 doors with access control only. Tested with: 10 live view Windows clients 1 client performing heavy playback or scrubbing operations

Hardware	
Processor	Intel® Core™ i3
Memory	16 GB DDR5 (2x 8 GB)
Storage	Surveillance Class HDD Total HDD slot: 2 Free HDD slot: 1 Out-of-the-box storage: 4 TB (1x4 TB)
Switch	8 ports integrated, 135 W total power budget Power over Ethernet (PoE) IEEE 802.3at Class 4
Graphics card	Intel® UHD Graphics
Power	Max 270 W, 135 W PoE dedicated 100 – 240 V AC, 3.5 A, 50/60 Hz 54 V DC, 5 A External power adapter
Power consumption	(Excluding power consumption from connected devices) Typical power consumption: 75 W Maximum power consumption: 95 W
Connectors	Front side: 2x USB 3.2 1x Universal audio jack Rear side Switch: 8x PoE RJ45 1 Gbps 1x RJ45 1 Gbps Rear side Server: 1x RJ45 1 Gbps 2x USB 2.0 2x HDMI 2.1

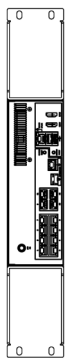
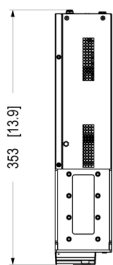
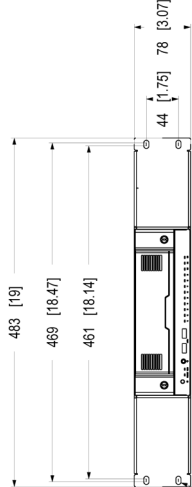
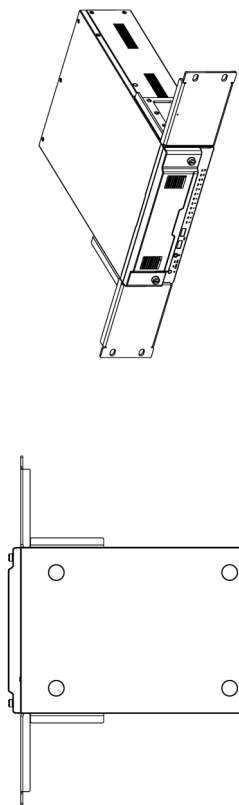
Video	
Video streaming	Live view in Windows client: 1 stream x 4K at 30 fps 4 split x 1080p at 30 fps* 9 split x 720p at 30 fps* 16 split x 360p at 15 fps 25 split x 360p at 15 fps 36 split x 360p at 15 fps Any combination of the above for up to two 4K monitors, except for configurations marked with *, where only one monitor can display streams at 30 fps. Supports one 8K monitor: 1 stream x 8K at 20 fps Currently only supports 1 stream without split views. Live view in web client (local or remote): 1 stream x 8K at 30 fps 1 stream x 4K at 30 fps 4 split x 1080p at 30 fps

9 split x 720p at 30 fps*
Any combination of the above on one 8K and one 4K monitor, except for the configuration marked with *, where only one monitor can display streams at 30 fps. Larger splits will affect server CPU performance. Maximum of 18 streams across all web clients, depending on stream profile. Playback in Windows client: Supports the same split scenarios as live view Recommended one monitor only due to disk load when playing back multiple streams with high video profiles. Playback at high speeds can affect video performance. Playback in web client: (local or remote): 1 stream up to 8K at 30 fps

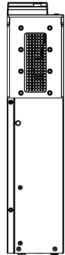
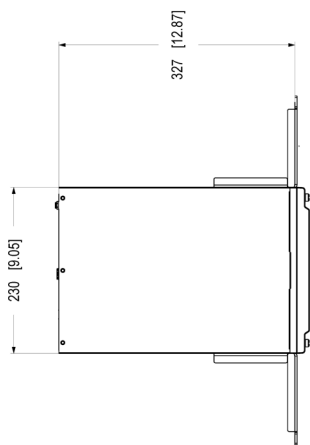
Approvals	
Product markings	UL/cUL, BIS, CE, KC, VCCI, RCM, BSMI, FCC, NOM
Supply chain	TAA compliant
EMC	EN 55035, EN 55032 Class A EN 61000-3-2, EN 61000-3-3 Australia/New Zealand: RCM AS/NZS CISPR 32 Class A Canada: ICES(A)/NMB(A) Japan: VCCI Class A Korea: KS C 9835, KS C 9832 Class A USA: FCC Part 15 Subpart B Class A Taiwan: CNS 15936
Safety	CAN/CSA C22.2 No. 62368-1 ed. 3, IEC/EN/UL 62368-1 ed. 3, RCM AS/NZS 62368. 1:2018, IS 13252
Cybersecurity	
Security	FIPS 140-2 level 2 certified Trusted Platform Module (TPM 2.0) supporting encrypted operating system drive and recording drive. Secure boot, signed switch firmware
General	
Operating system	Microsoft® Windows® 11 IoT Enterprise LTSC 2024 Operating system recovery: yes Operating system drive: 256 GB SSD
Operating conditions	0 °C to 40 °C (32 °F to 104 °F) Humidity: 10–90% RH (non-condensing)
Storage conditions	-40 °C to 65 °C (-40 °F to 149 °F) Humidity: 10–90% RH (non-condensing)
Dimensions	330 x 230 x 78 mm (13 x 9.1 x 3.1 in)
Weight	5.8 kg (12.8 lb)
Included accessories	Rack ears, power adapter
Optional accessories	Surveillance Hard Drive 6 TB available from Axis Surveillance Hard Drive 4 TB available from Axis AXIS TS2901 Appliance Stand Axis desktop terminals Axis Ethernet surge protector For more accessories, see axis.com
Warranty	Recorder and hard drive: 5-year warranty, see axis.com/warranty
Export control	This product is subject to export control regulations, and you should always comply with all applicable national and international export or re-export control regulations.

AXIS Camera Station Pro

For details about AXIS Camera Station Pro features and functions, see the AXIS Camera Station Pro datasheet on axis.com



∅ 7,1 [0.28]



Dimensions in mm (inch)	
2024	Nov-14
Rev 1.13	
3105608	A1 (1/1)

AXIS S2208 / S2212 MKII

Highlighted capabilities

Secure Boot

Secure Boot is a security system that ensures only approved software (operating system and embedded switch firmware when applicable) runs on an Axis device at startup. It uses a boot process consisting of an unbroken chain of cryptographically validated software, starting in immutable memory (boot ROM), to verify the authenticity of the software. By establishing the trust chain, Secure Boot guarantees that the device only executes software with a valid digital signature, preventing malicious code from running on the device and ensuring the device boots only with a signed software.

Signed firmware

The embedded switch firmware is signed with digital certificates using a secret, private key to guarantee its authenticity and integrity. This involves attaching a digital signature to the device firmware image, which is then verified by the device before acceptance and installation. The verification process checks for any compromise in the software's integrity, rejecting it if tampered with. Based on the industry-accepted Ed25519 elliptic-curve signature scheme, the verification process uses the digital certificate to confirm that the firmware remains unaltered and authentic, ensuring that any manipulation or tampering during transmission is detected before installation.

SBOM (Software Bill of Materials)

SBOM is a detailed list of all software components included in an Axis product, including third-party libraries and license information. This list provides customers with insight into the product's software composition, facilitating the management of software security and meeting transparency requirements.

TPM (Trusted Platform Module)

TPM is a security chip integrated into Axis devices to provide a secure environment for storing and processing sensitive data. As a component providing a set of cryptographic features, the TPM protects information from unauthorized access. Specifically, it securely stores the private key, which never leaves the TPM, and processes all related cryptographic operations within the module itself. This ensures the secret part of the certificate remains safe even in the event of a security breach. By enabling features like encryption, authentication, and platform integrity, the TPM contributes to safeguarding the device against unauthorized access and tampering.

For more information, see [axis.com/glossary](https://www.axis.com/glossary)