

## **AXIS I7010-VE Network Intercom**

**Repainting instructions**

# AXIS I7010-VE Network Intercom

## Impact on warranty

---

### Impact on warranty

This product is approved for repaint by Axis, provided that you follow the instructions in this document and at [axis.com/warranty-implication-when-repainting](https://axis.com/warranty-implication-when-repainting).

### Risks with repainting

There are several risks when disassembling or assembling an Axis product. Training of operators and the use of correct tools mediates some of the problems but they can never be fully avoided. Some of the risks include:

**ESD Damage** – Always handle the product in an ESD safe environment. Even if precautions are taken there is always a risk of ESD damage. The damage can remain undetected and cause problems during the lifetime of the equipment.

**Paint overspray** – Masking the different components of the equipment is critical. Failure to mask sensitive areas can cause problems when assembling the equipment. Areas not painted at the factory or which have a different surface treatment than the parts to be painted (threads, ground and electrical contact surfaces) must also be masked to ensure function.

# AXIS I7010-VE Network Intercom

## Repaint the product

---

### Repaint the product

#### Preparations

- If applicable, disassemble the device according to the instructions in this document.
- Clean all parts that will be repainted thoroughly to remove grease, dust, or oil.
- To ensure reassembly and functionality of the product, mask any openings (for example for screws, LED indicators, or microphones) before you paint.

#### Pretreatment of parts

Depending on the part material and type of coating applied at the factory, pretreatment might be necessary for the new coating to adhere well. Before you apply a new coating, we recommend the following pretreatment:

1. If necessary, roughen up the surface with a light sandpaper or similar to increase adhesion. Alternatively, remove the original coating down to the base material.
2. Clean the parts properly to remove oil, grease, and dust.
3. If necessary, apply a primer layer suitable for the specific material, to increase adhesion to the parts. For metal parts on outdoor products, we recommend a primer to improve corrosion resistance.

We recommend pretreatment of parts that are:

- powder-coated
- wet-painted
- anodised
- chromated
- stainless steel
- other metal
- plastic

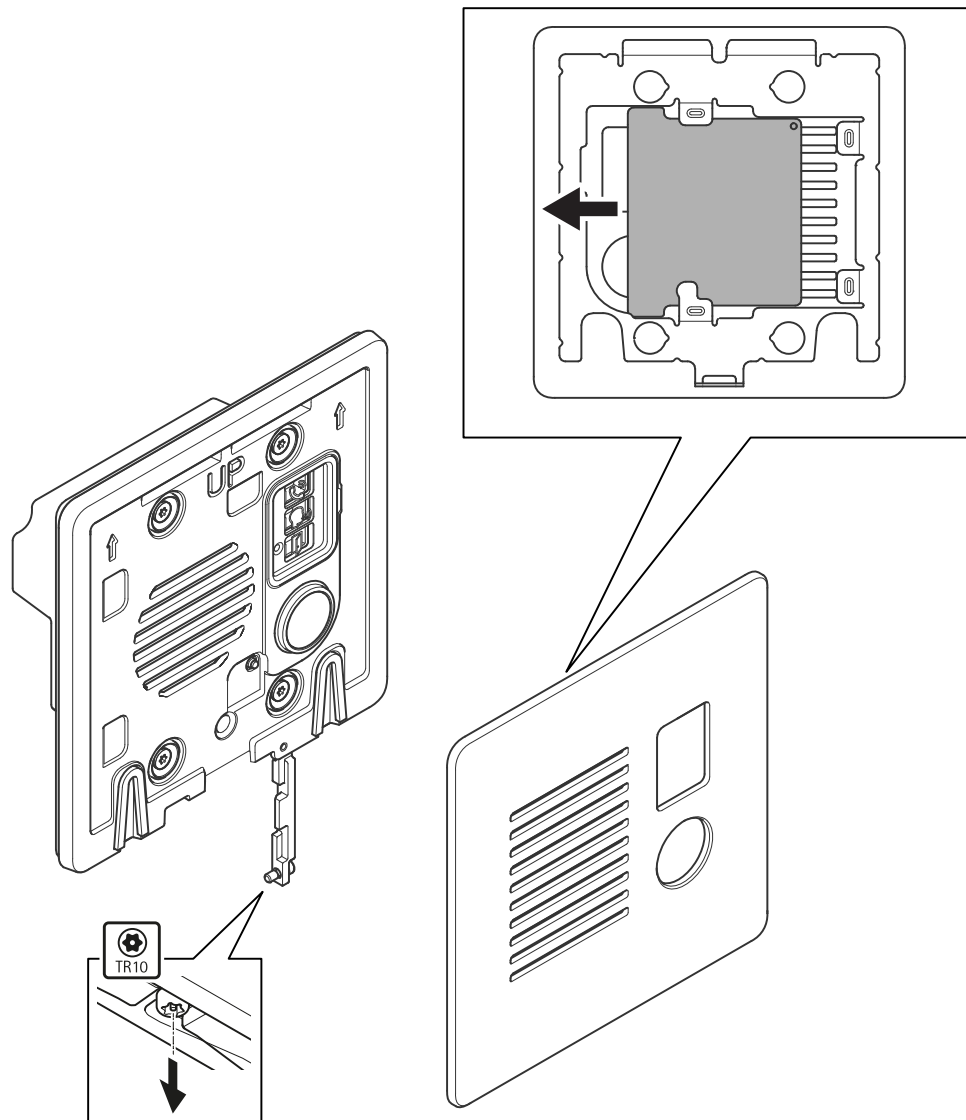
The material used in the product is stainless steel.

# AXIS I7010-VE Network Intercom

## Repaint the product

---

### Disassembly



1. Loosen the TR10 screw underneath the face plate.
2. Open the security latch.
3. Tilt the face plate outwards away from the bottom of the frame, and then pull it down to detach it.
4. Press and slide the speaker mesh on the back of the face plate sideways to detach it.

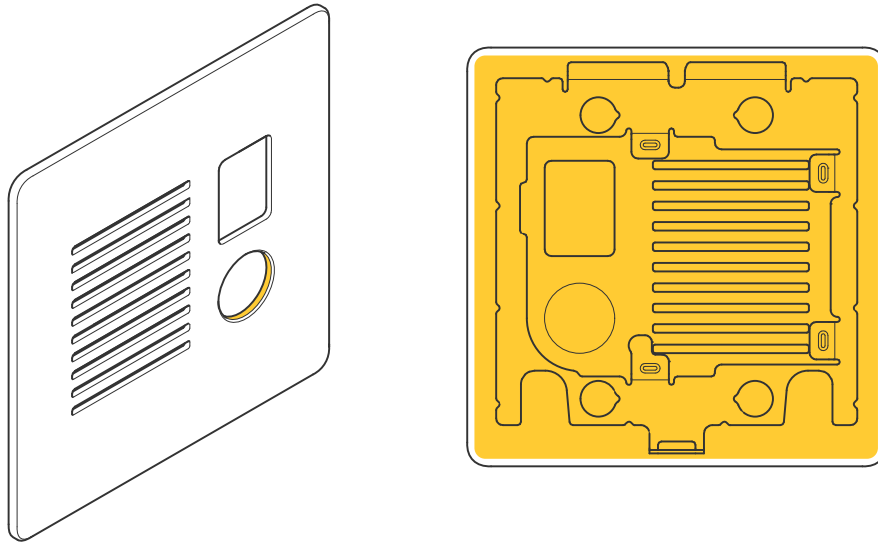
### Repainting

1. Make sure all necessary preparations of the face plate have been made, see *Preparations on page 3*.

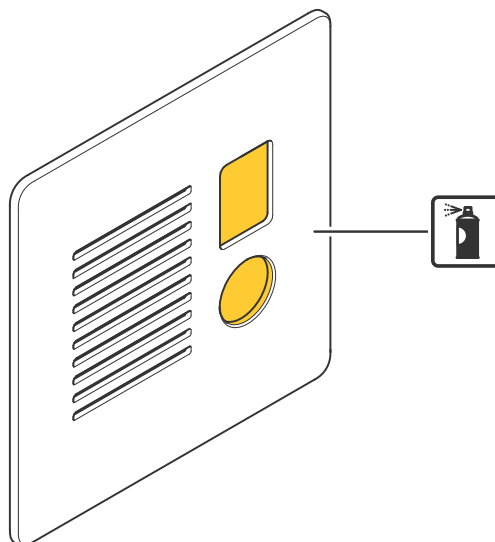
# AXIS I7010-VE Network Intercom

## Repaint the product

---



2. Mask the inner surface of the button opening.
3. Mask the back of the face plate, leaving approximately 3 mm (0.11 in) of the outer edge.



4. Apply a thin and even layer of spray paint according to the instructions of the paint manufacturer.
5. Let the paint dry.
6. To get a better coverage and clearer color, apply a second layer of spray paint.

# AXIS I7010-VE Network Intercom

## Repaint the product

---

7. When the paint is dry, remove the masking.

### Reassembly

1. Reattach the speaker mesh.
2. Reattach the face plate. Make sure to place the face plate at an angle before you close it.
3. Make sure the face plate is fully closed, then close the security latch.
4. Tighten the TR10 screw (torque 0.5 N m, 0.37 lb ft).

