



Security controls and
system management

How to guide

3.7

Gain insights from metadata produced by Axis devices

AXIS Optimizer for Milestone XProtect®



Step-by-step:

Gain insights from metadata produced by Axis devices

AXIS Optimizer Data Insights dashboard provides an efficient way for VMS users to gain an overview of data produced from connected Axis devices. It turns device metadata into actionable insights about the site in the form of graphs showing statistics, trends, and anomalies. Separate Smart Client dashboards are available for both administrator and operator roles. Operators get actionable information from aggregated data visualized in the form of detailed graphs from a range of data sources*. Administrators gain system-wide device online/offline status as well as active system alarms and events.

Requirements

- Install your choice of Milestone XProtect 2022 R2 or later:
 - Milestone XProtect Express+
 - Milestone XProtect Professional+
 - Milestone XProtect Expert
 - Milestone XProtect Corporate
 - Milestone XProtect Essential+
- Install the latest version of AXIS Optimizer on the Management Client
- Axis devices running AXIS OS 10.6 with either an MLPU or DLPU can generate object classification metadata. Please refer to the device for details about its supported object classes and attributes.
- Axis device with scene analysis enabled
- Camera time must be synchronized with NTP

Get started with AXIS Optimizer Data Insights dashboard

To open a dashboard of a specific camera view:

1. Go to Smart Client and open a new view
2. Click Show insights
AXIS Optimizer Data Insights dashboard opens

You can filter data by selecting a specific time range or camera view. You can also change from operator view to administrator view. Data dashboards are available for all operators while the administrator dashboard is only available for users with administrator rights.

Configure your dashboard

1. Check that the camera supports Axis Object Analytics.
See analytics in [Axis Product Selector](#)
2. Check that the camera's date and time are set correctly.
3. Ensure metadata is enabled for the camera in Management Client.
4. To enable scene analysis:
 - a. Go to **Devices > Metadata** and select your device.
 - Click **Record** and make sure **Recording** is enabled.
 - Click **Settings** and make sure **Analytics data** is enabled.
 - b. Turn on **Consolidated metadata** for faster loading time, if available.
See [Metadata and search](#)

Set permissions for the security groups

1. Go to **Site Navigation > Security > Roles**.
2. Select a role.
3. Go to **Cameras**. Select **Read**.
4. Go to **Metadata**. Select **Read**, **Live**, and **Playback**.

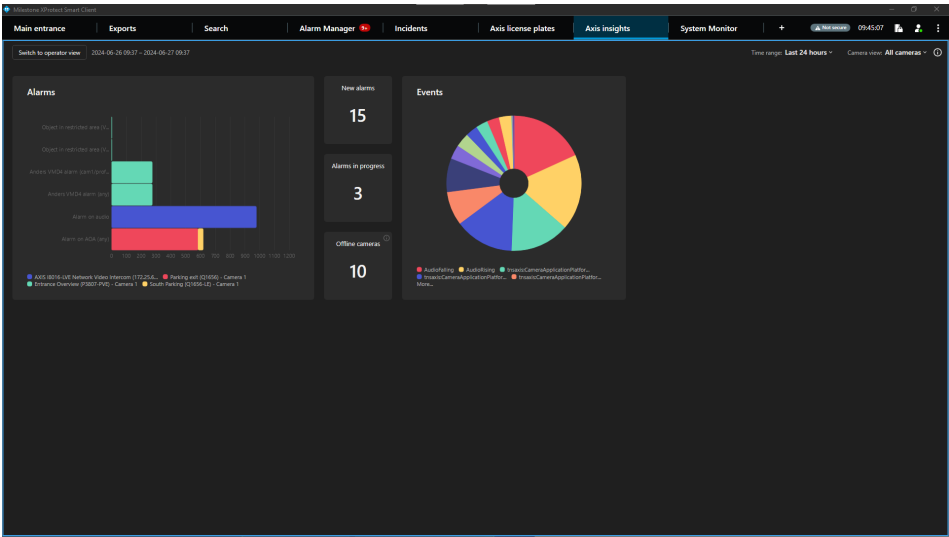
Add license plate metadata

Note: To add license plate metadata from supported analytics, see [Configure Axis license plates](#)

Valuable insights for administrators and operators

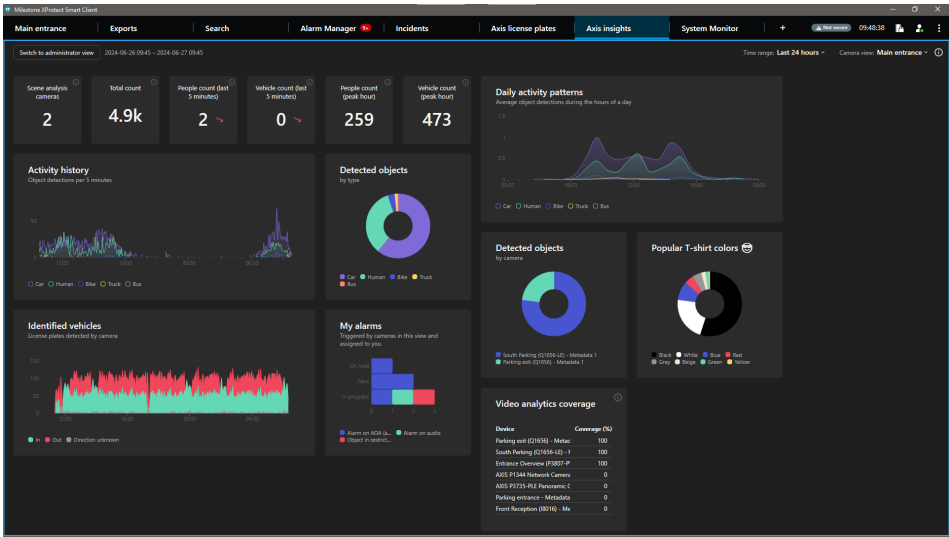
Administrator insights

System administrator roles gain a system-wide overview of their device online/offline status, as well as all active system alarms and events. This helps them improve their situational awareness, so they can ensure everything is up and running. For instance, they'll be notified if cameras in the system require attention.



Operator insights

Operator roles gain visualized, aggregated data from their existing device views. This data is presented as graphs showing alarms, statistics, trends, and anomalies. So operators can easily analyze data, gain deeper insights, and take necessary actions like responding to real-time events or using statistics to help optimize operations.



Support to get you started

- Watch AXIS Optimizer how to videos
- See online user manual
- Download more how to guides
- Read AXIS Optimizer getting started guide

Step-by-step workflows for specific jobs-to-be-done may change over time. Please refer to the [online user manual](#) for the latest descriptions.



Get valuable insights about your data

The sheer amount of data sent from just one camera mounted at one location over a day, week, or even longer is extensive. Operators must spend a lot of time analyzing data from different devices. For instance, if they wanted to know the total number of people and vehicles who entered an area during peak times, they would need to access data from every individual device. For administrators, if there's an issue with a device, they must use time and effort to find out which device has the issue.

How AXIS Optimizer solves this problem

AXIS Optimizer Data Insights dashboard offers improved situational awareness for both operators and administrators. For operator roles, the dashboard offers visualized, aggregated data from their existing camera views. This helps them analyze data and gain deeper scene understanding so they can take timely actions such as responding to real-time events or using statistics to help optimize operations. For administrators, a system-wide overview of device status makes it easy to ensure everything is up and running. With easy access to valuable insights, both operators and administrators can save considerable time and effort.

About AXIS Optimizer for Milestone XProtect

AXIS Optimizer is a suite of integrations that optimizes the performance of Axis devices in Milestone XProtect. It ensures all users save considerable time and effort while getting the most out of their Axis and Milestone system. Continuously updated to cover new Axis offerings, it's available for free as a one-time installer on axis.com.

About Axis Communications

Axis enables a smarter and safer world by creating solutions for improving security and business performance. As a network technology company and industry leader, Axis offers solutions in video surveillance, access control, intercom, and audio systems. They are enhanced by intelligent analytics applications and supported by high-quality training.

Axis has around 4,000 dedicated employees in over 50 countries and collaborates with technology and system integration partners worldwide to deliver customer solutions. Axis was founded in 1984, and the headquarters are in Lund, Sweden.