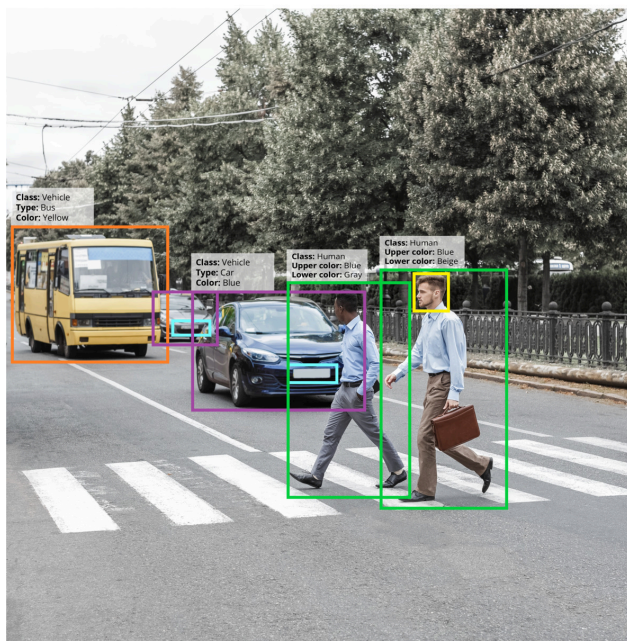


AXIS Scene Metadata

Actionable insights through scene analysis

AXIS Scene Metadata enhances scene understanding, providing critical details such as object classes (human or vehicle), clothing and vehicle colors, license plates, and speed data. This enables rapid decision-making, automated actions, and simplified search. AXIS Scene Metadata acts as a bridge between analytics at the edge and actionable insights, making data accessible and manageable. Seamlessly integrated with third-party solutions through standardized methods, and delivered directly from Axis cameras to your VMS, AXIS Scene Metadata helps reduce system and operational costs while ensuring efficiency and precision.

- > Drive actions and decisions by classifying data
- > Improve scene understanding and get insights
- > Make video searchable
- > Optimize system efficiency by edge analysis



AXIS Scene Metadata

General

Typical use cases	Delivers AI-based detections and granular classifications of moving objects to enable forensic search, scene understanding, actionable insights, and to identify trends and patterns.
Supported devices	Axis cameras with an MLPU or DLPU Axis radars
Compute platform	Edge
Configuration	Enable scene metadata in the device's web interface, through an API, or through a VMS

Capabilities

Features	Video: frame and consolidated metadata delivery methods for real-time and post-processing applications, best snapshot to include a cropped image of detected objects in metadata output, metadata visualization in the device's web interface
Object classes	Video: humans, faces, vehicles (types: cars, buses, trucks, bikes), license plates Radar: humans, vehicles
Object attributes	Video: vehicle color, upper/lower clothing color, confidence, position, license plate information ^a Radar: confidence, position, speed, distance, direction, longitude and latitude
Limitations	Insufficient contrast can affect detection and classification performance.

System integration

Application Programming Interface	Open API for software integration, including VAPIX®, AXIS Camera Application Platform (ACAP), and the ability to consume metadata stream in ACAP Native SDK; specifications at axis.com ONVIF® Profile M, specification at onvif.org
Network protocols	RTSP, MQTT
System tools	AXIS Metadata Monitor

a. Requires an *AXIS Q1686-DLE Radar-Video Fusion Camera with AXIS License Plate Verifier*.