

# AXIS S3016 Recorder

## 16-channel recorder with powerful PoE switch

AXIS S3016 Recorder is a 1U rack recorder with an integrated PoE switch for up to 16 devices and a maximum of PoE class 4 per port. It provides reliable recording thanks to the four surveillance-grade hard drives and different RAID levels. This high-performance recorder offers a gigabit switch for connecting network devices and a 2.5 gigabit uplink for video recordings in ultra-high definition and includes a 5-year warranty. The recorder can be used in single-site, multi-site systems and for expanding storage and network in existing systems. It is compatible with both AXIS Camera Station Edge and AXIS Camera Station Pro installations.

- > **Rack recorder with integrated PoE switch**
- > **Easy to install and operate**
- > **Surveillance-grade hard drives**
- > **USB port for exporting video**
- > **5-year warranty**



# AXIS S3016 Recorder

## Variants

AXIS S3016 Recorder 8 TB  
AXIS S3016 Recorder 16 TB  
AXIS S3016 Recorder 32 TB

## Hardware

### Processor

i.MX 8QuadMax

### Storage

Hot swappable Surveillance Class HDD  
Total HDD slots: 4  
Free HDD slots: 0  
**8 TB**  
Out-of-the-box storage: 6 TB after RAID 5  
Out-of-the-box capacity without RAID: 8 TB (4x2 TB)  
**16 TB**  
Out-of-the-box storage: 12 TB after RAID 5  
Out-of-the-box capacity without RAID: 16 TB (4x4 TB)  
**32 TB**  
Out-of-the-box storage: 24 TB after RAID 5  
Out-of-the-box capacity without RAID: 32 TB (4x8 TB)

### RAID

Factory RAID level: 5  
Supported RAID levels: 0, 1, 5, 6, 10

### Switch

16 ports integrated, 305 W total power budget  
Power over Ethernet (PoE) IEEE 802.3at Class 4

### Power

Max 650 W, 305 W PoE dedicated  
100–240 V AC, 50–60 Hz

### Power consumption

(Excluding power consumption from connected devices)  
**Typical power consumption**  
8 TB: 31 W  
16 TB: 34 W  
32 TB: 44 W  
**Maximum power consumption**  
8 TB: 37 W  
16 TB: 41 W  
32 TB: 49 W

## Connectors

### Front side:

1x USB 3.0

### Rear side:

16x PoE RJ45 1 Gbps  
1x AUX RJ45 2.5 Gbps  
1x LAN RJ45 2.5 Gbps  
1x LAN SFP 1 Gbps  
1x USB 2.0  
1x power connector

## Video

### Recording

Qualified for recording up to 16 video sources with a total recording rate up to 256 Mbit/s

### Video compression

H.264 (MPEG-4 Part 10/AVC), H.265 (MPEG-H Part 2/HEVC)  
Depending on camera support

### Resolution

Supports all camera resolutions

### Frame rate

Supports all camera frame rates

## Audio

### Audio streaming

One-way audio recording depending on camera support

### Audio encoding

AAC  
Depending on camera support

## Network

### Network protocols

IPv4, IPv6 USGv6, ICMPv4/ICMPv6, HTTP, HTTPS<sup>1</sup>, HTTP/2, TLS<sup>1</sup>, SFTP, SMTP, mDNS (Bonjour), UPnP®, SNMP v1/v2c/v3 (MIB-II), DNS/DNSv6, NTP, NTS, RTSP, TCP, UDP, IGMPv1/v2/v3, ICMP, DHCPv4/v6, ARP, SSH, LLDP, IEEE 802.1X (EAP-TLS), IEEE 802.1AR

1. This product includes software developed by the OpenSSL Project for use in the OpenSSL Toolkit. (openssl.org), and cryptographic software written by Eric Young (eay@cryptsoft.com).

## System integration

### Application Programming Interface

Open API for software integration, including VAPIX® and AXIS Camera Application Platform (ACAP); specifications at [axis.com/developer-community](https://axis.com/developer-community).  
One-click cloud connection

### Video management systems

Compatible with AXIS Camera Station Edge, AXIS Camera Station Pro, AXIS Camera Station 5, and video management software from Axis' partners available at [axis.com/vms](https://axis.com/vms).

### Event triggers

Hard drive error, hard drive temperature warning, CPU temperature warning, fan error, PoE budget exceeded, RAID warning

## Approvals

### Product markings

UL/cUL, BIS, CE, VCCI, NOM, RCM, BSMI

### Supply chain

TAA compliant

### EMC

EN 55035, EN 55032 Class A, EN 61000-3-2, EN 61000-3-3, EN 61000-6-1, EN 61000-6-2  
**Australia/New Zealand:** RCM AS/NZS CISPR 32 Class A  
**Canada:** ICES-3(A)/NMB-3(A)  
**Japan:** VCCI Class A  
**USA:** FCC Part 15 Subpart B Class A  
**Taiwan:** CNS 15936

### Safety

CAN/CSA C22.2 No. 62368-1, IEC/EN/UL 62368-1 ed. 3, RCM AS/NZS 62368.1:2018, IS 13252, BSMI-mark, NOM-019

### Environment

IEC 60068-2-1, IEC 60068-2-2, IEC 60068-2-6, IEC 60068-2-14, IEC 60068-2-27, IEC 60068-2-78, IEC/EN 60529 IP20

### Network

NIST SP500-267

## Cybersecurity

ETSI EN 303 645, BSI IT Security Label, FIPS 140

## Cybersecurity

### Edge security

**Software:** Signed OS, digest authentication, password protection

**Hardware:** Axis Edge Vault cybersecurity platform TPM 2.0 (CC EAL4+, FIPS 140-2 Level 2), secure element (CC EAL 6+), system-on-chip security (TEE), Axis device ID, secure keystore, secure boot, encrypted filesystem (AES-XTS-Plain64 256bit)

### Network security

IEEE 802.1X (EAP-TLS)<sup>2</sup>, IEEE 802.1AR, HTTPS/HSTS<sup>2</sup>, TLS v1.2/v1.3<sup>2</sup>, Network Time Security (NTS), X.509 Certificate PKI

### Documentation

*AXIS OS Hardening Guide*

*Axis Vulnerability Management Policy*

*Axis Security Development Model*

To download documents, go to [axis.com/support/cybersecurity/resources](https://axis.com/support/cybersecurity/resources)

To read more about Axis cybersecurity support, go to [axis.com/cybersecurity](https://axis.com/cybersecurity)

## General

### Supported devices

Axis devices with firmware 5.50 or later  
AXIS Companion mini cameras and third-party cameras are not supported

### Casing

Steel casing

Color: black NCS S 9000-N

### Form factor

Rack 1U

Compatible with EIA-310 racks

### Operating conditions

Temperature: 0 °C to 45 °C (32 °F to 113 °F)

Humidity: 10–85% RH (non-condensing)

### Storage conditions

Temperature: -20 °C to 65 °C (-4 °F to 149 °F)

Humidity: 5–90% RH (non-condensing)

2. This product includes software developed by the OpenSSL Project for use in the OpenSSL Toolkit. ([openssl.org](https://openssl.org)), and cryptographic software written by Eric Young ([ey@cryptsoft.com](mailto:ey@cryptsoft.com)).

## Dimensions

484 x 402 x 44.1 mm (19.1 x 15.8 x 1.7 in)

Minimum rail depth<sup>3</sup>: 398 mm (15.7 in)

Product installation depth<sup>4</sup>: 377 mm (14.8 in)

Rail adjustability range<sup>5</sup>: 376–499 mm (14.8–19.6 in)

---

## Weight

8 TB: 10.24 kg (22.6 lb)

16 TB: 10.08 kg (22.2 lb)

32 TB: 10.68 kg (23.5 lb)

---

## Box content

Recorder, rack rails, front cover, rubber feet, installation guide, power cord, screws

---

## Optional accessories

AXIS TS3901 Rail Extensions

For more accessories, go to [axis.com/products/axis-s3016](https://axis.com/products/axis-s3016)

---

## System tools

AXIS Site Designer, AXIS Device Manager, product selector, accessory selector

Available at [axis.com](https://axis.com)

---

## Languages

English, German, French, Spanish, Italian, Russian, Simplified Chinese, Japanese, Korean, Portuguese, Polish, Traditional Chinese, Dutch, Czech, Swedish, Finnish, Turkish, Thai, Vietnamese

---

## Warranty

5-year warranty, see [axis.com/warranty](https://axis.com/warranty)

---

## Part numbers

Available at [axis.com/products/axis-s3016#part-numbers](https://axis.com/products/axis-s3016#part-numbers)

---

## Sustainability

### Substance control

PVC free

RoHS in accordance with EU RoHS Directive 2011/65/EU/ and EN 63000:2018

REACH in accordance with (EC) No 1907/2006. For SCIP UUID, see [echa.europa.eu](https://echa.europa.eu)

---

## Materials

Renewable carbon-based plastic content: 63% (recycled)

Screened for conflict minerals in accordance with OECD guidelines

To read more about sustainability at Axis, go to [axis.com/about-axis/sustainability](https://axis.com/about-axis/sustainability)

---

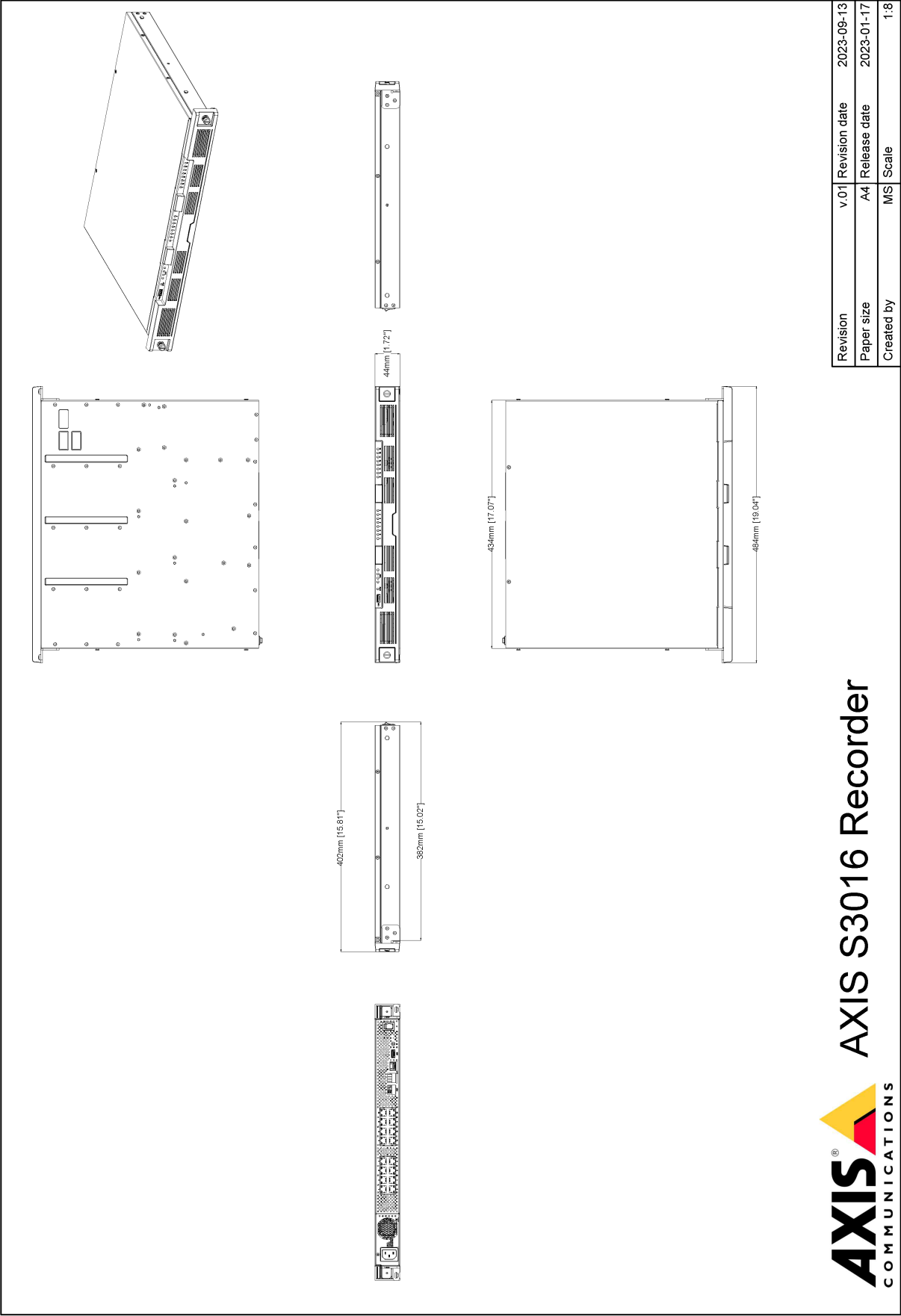
## Environmental responsibility

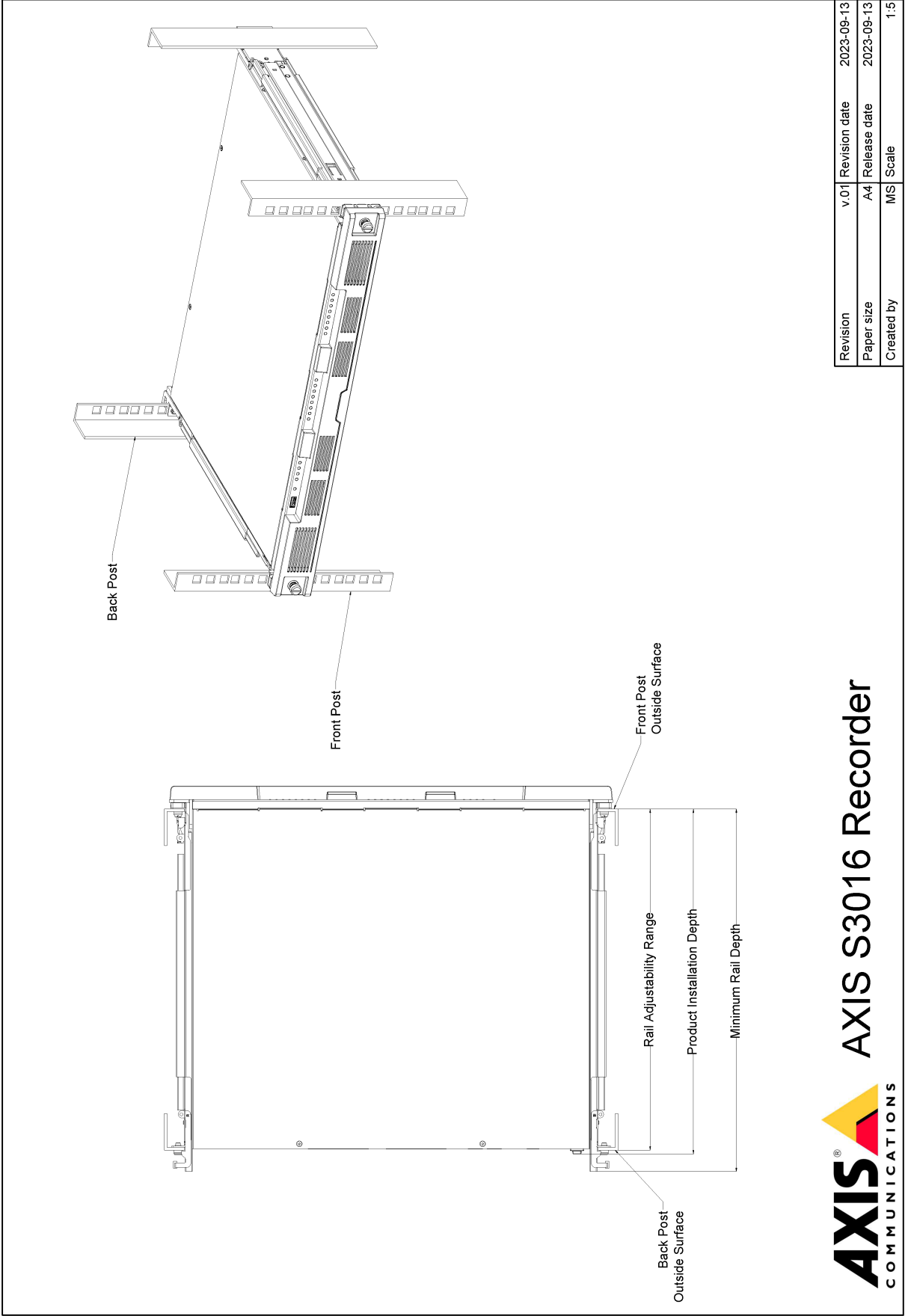
[axis.com/environmental-responsibility](https://axis.com/environmental-responsibility)

Axis Communications is a signatory of the UN Global Compact, read more at [unglobalcompact.org](https://unglobalcompact.org)

3. Measured from the outside-facing surface of the front rack post until the end of the rail.
4. Measured from the outside-facing surface of the front rack post to the back of the product.
5. The allowable distance between the outside-facing surface of the front and rear rack posts.

Dimension drawing





## Highlighted capabilities

### Axis Edge Vault

Axis Edge Vault is the hardware-based cybersecurity platform that safeguards the Axis device. It forms the foundation that all secure operations depend on and offer features to protect the device's identity, safeguard its integrity and protect sensitive information from unauthorized access. For instance, **secure boot** ensures that a device can boot only with **signed OS**, which prevents physical supply chain tampering. With signed OS, the device is also able to validate new device software before accepting to install it. And the **secure keystore** is the critical building-block for protecting cryptographic information used for secure communication (IEEE 802.1X, HTTPS, Axis device ID, access control keys etc.) against malicious extraction in the event of a security breach. The secure keystore and secure connections are provided through a Common Criteria or FIPS 140 certified hardware-based cryptographic computing module.

To read more about Axis Edge Vault, go to [axis.com/solutions/edge-vault](https://axis.com/solutions/edge-vault).

For more information, see [axis.com/glossary](https://axis.com/glossary)