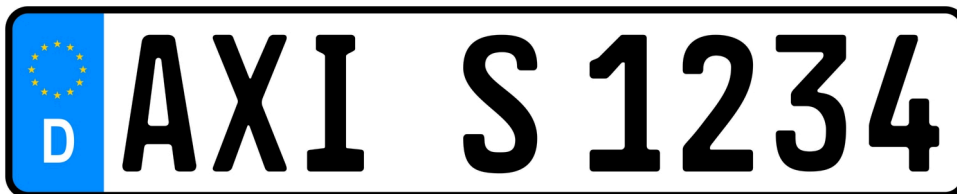


## AXIS P1455-LE-3 License Plate Verifier Kit

Cost-effective kit for free-flow traffic

AXIS P1455-LE-3 includes an HDTV 1080p fixed bullet camera with AXIS License Plate Verifier preinstalled. Featuring free-flow mode, it's ideal for use in traffic at up to 105 km/h (65 mph), on access roads, in city centers, gated communities, and campuses. The compact and robust IK10-rated camera includes shock detection for installation in all environments. Featuring a 29 mm telephoto lens, this cost-effective solution can read license plates from 7 to 20 meters (20-65 feet). It includes Axis image enhancement technologies as well as Optimized IR – to ensure sharp images for license plate reading 24/7. Furthermore, it offers tight integration with AXIS Camera Station.

- > For use at up to 105 km/h (65 mph)
- > Read license plates from 7-20 m (20-65 ft)
- > Proven for tough weather conditions
- > OptimizedIR for recognition in darkness
- > Integration with AXIS Camera Station



# AXIS License Plate Verifier

## Application

Compute platform	Edge
Licenses	AXIS License Plate Verifier license included.
Configuration	Web configuration included
Settings	Define area of interest in scene. Allow- and blocklist logic. Barrier mode: Open to all, open to allowlisted, open to all but blocklisted. Minimum width: 130 pixels for one-row license plates; 70 pixels for two-row license plates. FIFO event log entries including thumbnail image of license plate. Up to 1000 entries on camera storage. Up to 100 000 entries on AXIS Surveillance Cards. Configurable retention time of stored events
Detection range	7.0 to 20 m (20 to 65 ft)
Vehicle speed	Up to 105 km/h (65 mph)
Detection time	Less than 1 second.

## Scenarios

Typical applications	<b>Free-flow traffic monitoring</b> Reads license plates at speeds up to 105 km/h (65 mph). Ideal for city centers, larger access roads, toll plazas, and areas like campuses, harbors or airports. Enables event triggers in a VMS, such as AXIS Camera Station to facilitate LPR-based search. <b>Efficient vehicle access control</b> Efficiently automates the entry and exit procedures for authorized vehicles at depots, service centers, lots, priority lanes, parking facilities, and various other locations. Validates license plates against allowlists or blocklists for efficient, seamless access control. Supports up to 10,000 license plates in each list. <b>Adding more functionality</b> Integrate with Axis network door controllers for increased options and functionality. Axis network door controllers, in conjunction with AXIS Camera Station Secure Entry, support more advanced access rules, schedules, and detailed event logs. Compatible with various partner software, offering diverse credential options and tailored features to meet specific needs.
----------------------	---

## System integration

Application Programming Interface	Open API for software integration.
Event streaming	Integrates with camera event management system to enable event streaming to management software and camera actions such as I/O control, notification, and edge storage.
Supported devices	Direct integration with Axis network door controllers and Axis A91 Network I/O Relay Modules.
<b>General</b>	
Supported countries	For a complete list of supported countries, go to the product page at <a href="http://axis.com">axis.com</a>
Languages	English

# AXIS P1455-LE-3 License Plate Verifier Kit

<b>Camera</b>		<b>Event conditions</b>	Analytics Detectors: live stream accessed, video motion detection, audio detection, day/night mode, shock detection, tampering Hardware: network, temperature Input Signal: digital input port, manual trigger, virtual inputs Storage: disruption, recording System: system ready Time: recurrence, use schedule Supervised input changed state MQTT subscribe
<b>Image sensor</b>	1/2.8" progressive scan RGB CMOS	<b>Event actions</b>	Record video: SD card and network share Upload of images or video clips: FTP, SFTP, HTTP, HTTPS, network share and email Pre- and post-alarm video or image buffering for recording or upload Notification: email, HTTP, HTTPS, TCP and SNMP trap PTZ: PTZ preset, start/stop guard tour Overlay text, external output activation, day/night mode MQTT publish
<b>Lens</b>	Varifocal, 10.9-29 mm, F1.7-1.7 Horizontal field of view 29°-11° Vertical field of view 17°-6.5° Varifocal, Remote focus and zoom, P-Iris control, IR corrected	<b>Built-in installation aids</b>	Pixel counter, remote zoom (3x optical), remote focus, auto rotation
<b>Day and night</b>	Automatically removable infrared-cut filter	<b>Analytics</b>	
<b>Minimum illumination</b>	Color: 0.07 lux, at 50 IRE F1.7 B/W: 0.01 lux, at 50 IRE F1.7 0 lux with IR illumination on	<b>Compute capabilities</b>	Machine learning processing unit (MLPU)
<b>Shutter speed</b>	1/66500 s to 2 s	<b>Applications</b>	Included AXIS License Plate Verifier, Scene metadata AXIS Video Motion Detection, active tampering, shock detection Support for AXIS Camera Application Platform enabling installation of third-party applications, see <a href="http://axis.com/acap">axis.com/acap</a>
<b>System on chip (SoC)</b>		<b>AXIS Scene Metadata</b>	Object classes: humans, faces, vehicles (types: cars, buses, trucks, bikes), license plates Object attributes: confidence, position
<b>Model</b>	ARTPEC-7	<b>Approvals</b>	
<b>Memory</b>	1024 MB RAM, 512 MB Flash	<b>EMC</b>	EN 55032 Class A, EN 50121-4, EN 55035, EN 61000-3-3, EN 61000-6-1, EN 61000-6-2 USA: FCC Part 15 Subpart B Class A Canada: ICES-3(A)/NMB-3(A) Japan: VCCI Class A Australia/New Zealand: RCM AS/NZS CISPR 32 Class A Railway: IEC 62236-4
<b>Video</b>		<b>Safety</b>	IEC/EN/UL 62368-1, IEC/EN/UL 60950-22, IS 13252, IEC 62471
<b>Video compression</b>	H.264 (MPEG-4 Part 10/AVC) Baseline, Main and High Profiles H.265 (MPEG-H Part 2/HEVC) Main Profile Motion JPEG	<b>Environment</b>	IEC 60068-2-1, IEC 60068-2-2, IEC 60068-2-6, IEC 60068-2-14, IEC 60068-2-27, IEC 60068-2-78, IEC/EN 60529 IP66/IP67, IEC/EN 62262 IK10, NEMA 250 Type 4X, NEMA TS 2 (2.2.7-2.2.9)
<b>Resolution</b>	1920x1080 to 160x90	<b>Network</b>	NIST SP500-267
<b>Frame rate</b>	With Forensic WDR: Up to 25/30 fps (50/60 Hz) in all resolutions No WDR: Up to 50/60 fps (50/60 Hz) in all resolutions	<b>Cybersecurity</b>	ETSI EN 303 645, BSI IT Security Label
<b>Video streaming</b>	Multiple, individually configurable streams in H.264, H.265 and Motion JPEG Axis Zipstream technology in H.264 and H.265 Controllable frame rate and bandwidth VBR/ABR/MBR H.264/H.265 Low latency mode Video streaming indicator	<b>Cybersecurity</b>	
<b>Multi-view streaming</b>	Up to 8 individually cropped out view areas	<b>Edge security</b>	Software: Signed OS, brute force delay protection, digest authentication and OAuth 2.0 RFC6749 OpenID Authorization Code Flow for centralized ADFS account management, password protection
<b>Image settings</b>	Saturation, contrast, brightness, sharpness, Forensic WDR: Up to 120 dB depending on scene, white balance, day/night threshold, exposure mode, exposure zones, defogging, compression, orientation: auto, 0°, 90°, 180°, 270° including Corridor Format, mirroring of images, dynamic text and image overlay, privacy masks, motion-adaptive exposure, electronic image stabilization	<b>Network security</b>	IEEE 802.1X (EAP-TLS, PEAP-MSCHAPv2) <sup>c</sup> , IEEE 802.1AE (MACsec PSK/EAP-TLS), HTTPS/HSTS <sup>d</sup> , TLS v1.2/v1.3 <sup>e</sup> , Network Time Security (NTS), X.509 Certificate PKI, host-based firewall
<b>Pan/Tilt/Zoom</b>	Digital PTZ, digital zoom	<b>Documentation</b>	<i>AXIS OS Hardening Guide</i> <i>Axis Vulnerability Management Policy</i> <i>Axis Security Development Model</i> AXIS OS Software Bill of Material (SBOM) To download documents, go to <a href="http://axis.com/support/cybersecurity/resources">axis.com/support/cybersecurity/resources</a> To read more about Axis cybersecurity support, go to <a href="http://axis.com/cybersecurity">axis.com/cybersecurity</a>
<b>Audio</b>		<b>General</b>	
<b>Audio streaming</b>	Audio in, simplex, two-way audio via edge-to-edge technology	<b>Casing</b>	IP66/IP67-, NEMA 4X-, and IK10-rated casing Polycarbonate blend and aluminium Color: white NCS S 1002-B
<b>Audio encoding</b>	24bit LPCM, AAC-LC 8/16/32/48 kHz, G.711 PCM 8 kHz, G.726 ADPCM 8 kHz, Opus 8/16/48 kHz Configurable bit rate	<b>Sustainability</b>	PVC free, BFR/CFR free
<b>Audio input/output</b>	External microphone input or line input, digital audio input, network speaker pairing	<b>Power</b>	Power over Ethernet IEEE 802.3af/802.3at Type 1 Class 3
<b>Network</b>			
<b>Network protocols</b>	IPv4, IPv6 USGv6, ICMPv4/ICMPv6, HTTP, HTTPS <sup>a</sup> , HTTP/2, TLS <sup>b</sup> , QoS Layer 3 DiffServ, FTP, SFTP, CIFS/SMB, SMTP, mDNS (Bonjour), UPnP <sup>®</sup> , SNMP v1/v2c/v3 (MIB-II), DNS/DNSv6, DDNS, NTP, NTS, RTSP, RTP, SRTP/RTSPS, TCP, UDP, IGMPv1/v2/v3, RTCP, ICMP, DHCPv4/v6, ARP, SSH, LLDP, CDP, MQTT v3.1.1, Secure syslog (RFC 3164/5424, UDP/TCP/TLS), Link-Local address (ZeroConf)		
<b>System integration</b>			
<b>Application Programming Interface</b>	Open API for software integration, including VAPIX <sup>®</sup> and AXIS Camera Application Platform; specifications at <a href="http://axis.com/developer-community">axis.com/developer-community</a> . One-Click Cloud Connection ONVIF <sup>®</sup> Profile G, ONVIF <sup>®</sup> Profile M, ONVIF <sup>®</sup> Profile S and ONVIF <sup>®</sup> Profile T, specification at <a href="http://onvif.org">onvif.org</a>		
<b>Video management systems</b>	Compatible with AXIS Camera Station Edge, AXIS Camera Station Pro, AXIS Camera Station 5, and video management software from Axis' partners available at <a href="http://axis.com/vms">axis.com/vms</a> .		
<b>Onscreen controls</b>	Day/night shift Defogging Wide dynamic range IR illumination Electronic image stabilization Video streaming indicator		

	Typical: 8.5 W, max 12.95 W 12–28 V DC, typical 7.8 W, max 12.95 W
<b>Connectors</b>	Shielded RJ45 10BASE-T/100BASE-TX/1000BASE-T 3.5 mm mic/line in Terminal block for 1 supervised alarm input and 1 output (12 V DC output, max. load 25 mA) DC input
<b>IR illumination</b>	OptimizedIR with power-efficient, long-life 850 nm IR LEDs Range of reach 45 m (150 ft) or more depending on the scene
<b>Storage</b>	Support for microSD/microSDHC/microSDXC card Support for SD card encryption (AES-XTS-Plain64 256bit) Recording to network-attached storage (NAS) For SD card and NAS recommendations see <a href="http://axis.com">axis.com</a>
<b>Operating conditions</b>	–40 °C to 60 °C (–40 °F to 140 °F) Maximum temperature according to NEMA TS2 (2.2.7): 74 °C (165 °F) Humidity 10–100% RH (condensing)
<b>Storage conditions</b>	–40 °C to 65 °C (–40 °F to 149 °F) Humidity 5–95% RH (non-condensing)
<b>Weight</b>	With weather shield: 1.2 kg (2.65 lb)
<b>Dimensions</b>	Ø132 x 264 mm (Ø5.2 x 10.4 in)

<b>Included accessories</b>	Installation guide, Windows® decoder 1-user license, drill hole template, connector kit, mounting bracket, Torx® L-keys AXIS Weather Shield L
<b>Optional accessories</b>	AXIS T94F01M J-Box/Gang Box Plate, AXIS T91A47 Pole Mount, AXIS T94P01B Corner Bracket, AXIS T94F01P Conduit Back Box, AXIS Weather Shield K, Axis PoE Midspans For more accessories, see <a href="http://axis.com">axis.com</a>
<b>Languages</b>	English, German, French, Spanish, Italian, Russian, Simplified Chinese, Japanese, Korean, Portuguese, Traditional Chinese, Dutch, Czech, Swedish, Finnish, Turkish, Thai, Vietnamese
<b>Warranty</b>	5-year warranty, see <a href="http://axis.com/warranty">axis.com/warranty</a>

- This product includes software developed by the OpenSSL Project for use in the OpenSSL Toolkit. ([openssl.org](http://openssl.org)), and cryptographic software written by Eric Young ([ey@cryptsoft.com](mailto:ey@cryptsoft.com)).
- This product includes software developed by the OpenSSL Project for use in the OpenSSL Toolkit. ([openssl.org](http://openssl.org)), and cryptographic software written by Eric Young ([ey@cryptsoft.com](mailto:ey@cryptsoft.com)).
- This product includes software developed by the OpenSSL Project for use in the OpenSSL Toolkit. ([openssl.org](http://openssl.org)), and cryptographic software written by Eric Young ([ey@cryptsoft.com](mailto:ey@cryptsoft.com)).
- This product includes software developed by the OpenSSL Project for use in the OpenSSL Toolkit. ([openssl.org](http://openssl.org)), and cryptographic software written by Eric Young ([ey@cryptsoft.com](mailto:ey@cryptsoft.com)).
- This product includes software developed by the OpenSSL Project for use in the OpenSSL Toolkit. ([openssl.org](http://openssl.org)), and cryptographic software written by Eric Young ([ey@cryptsoft.com](mailto:ey@cryptsoft.com)).