

HOW TO.

Configure Aperio™ Wireless locks within AXIS Camera Station

Contents

Introduction	3
	3
Step 1 – Adding/updating & setting up devices	4
To add the devices	4
To update the devices	5
To setup the devices	6
Step 2 – Connecting the Aperio Hub and wireless locks	8
To connect the devices	8
To create doors	11
Considerations and limitations	14

Introduction

This document will show you how to configure Aperio™ wireless locks within AXIS Camera Station and set up related doors.



Prerequisites

AXIS Camera Station 5.54 or later

AXIS Door Controller 11.6.16.1 or later

Aperio™ locks configured to Aperio™ hub via the PAP tool

AXIS Door Controller Extension License

Please note that Axis doesn't take any responsibility for how this configuration may affect your system. If the modification fails or if you get other unexpected results, you may have to restore the settings to default.

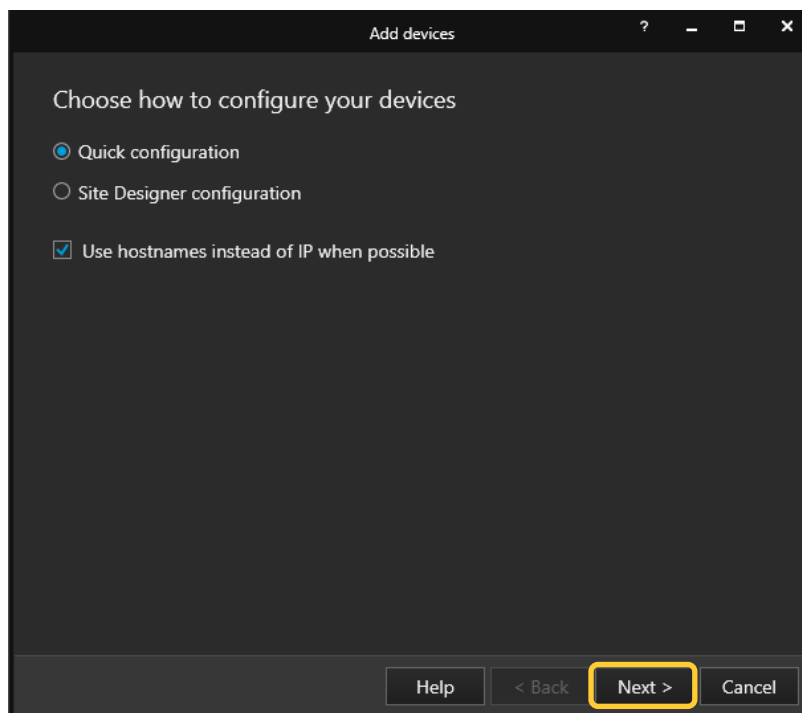
Step 1 – Adding/updating & setting up devices

Start by adding the unit(s) to Axis Camera Station and ensuring that they are running the latest firmware. For the devices used we require the use of HTTPS for end-to-end security, these devices should also use ACS as an NTP.

To add the devices

Follow these steps if you need to add the devices:

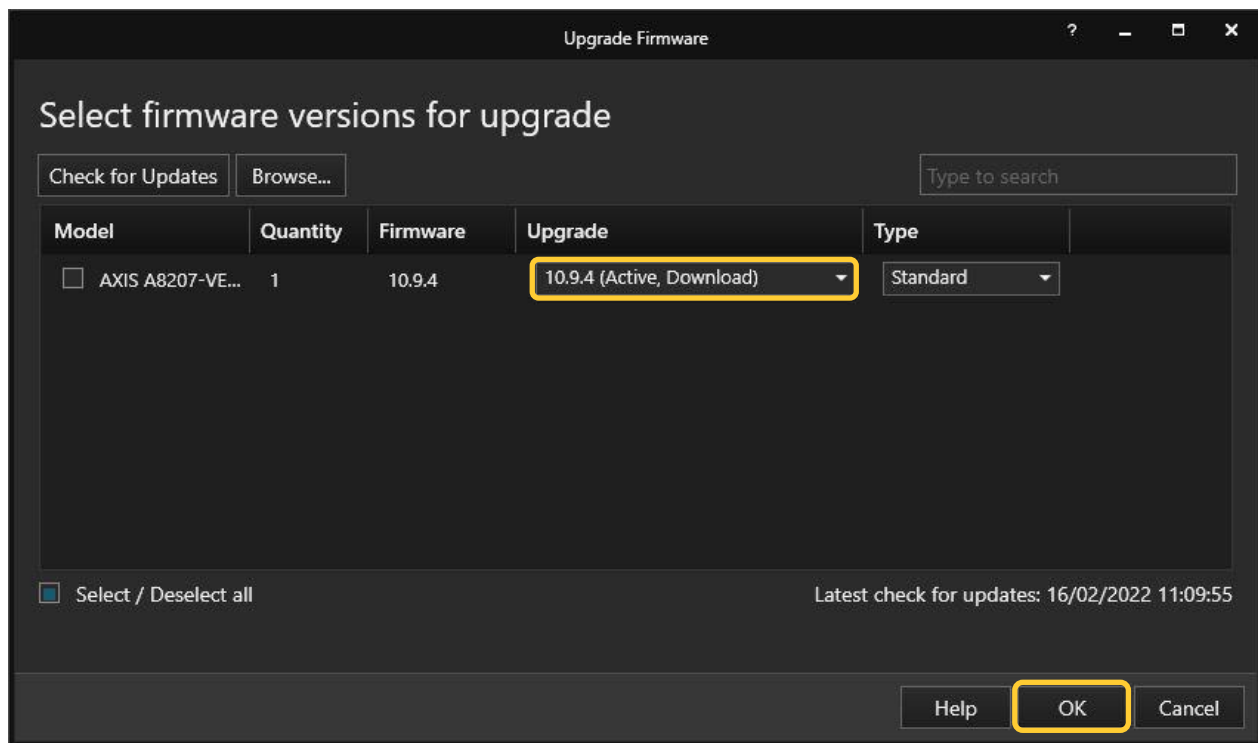
1. In Axis Camera Station open the configuration tab via the “+” symbol found at the top of the screen.
2. From the left menu select “Devices” and under this drop-down select “Add Devices”
3. On this page if the units are in your network, you should see them, if they are missing then you can try do a manual search via the button “Manual Search”. If they still cannot be found, please check the units are powered and are on the same network.
4. If the units are greyed out, this means they require the password for the unit, this is entered by clicking on the “Enter password” under status for the unit.
5. Once you see the units you wish to add, you can hold down the “ctrl” key and select the units, then click add found on the bottom left.
6. Follow the pop-up wizard to add these devices



To update the devices

Follow these steps to update your devices:

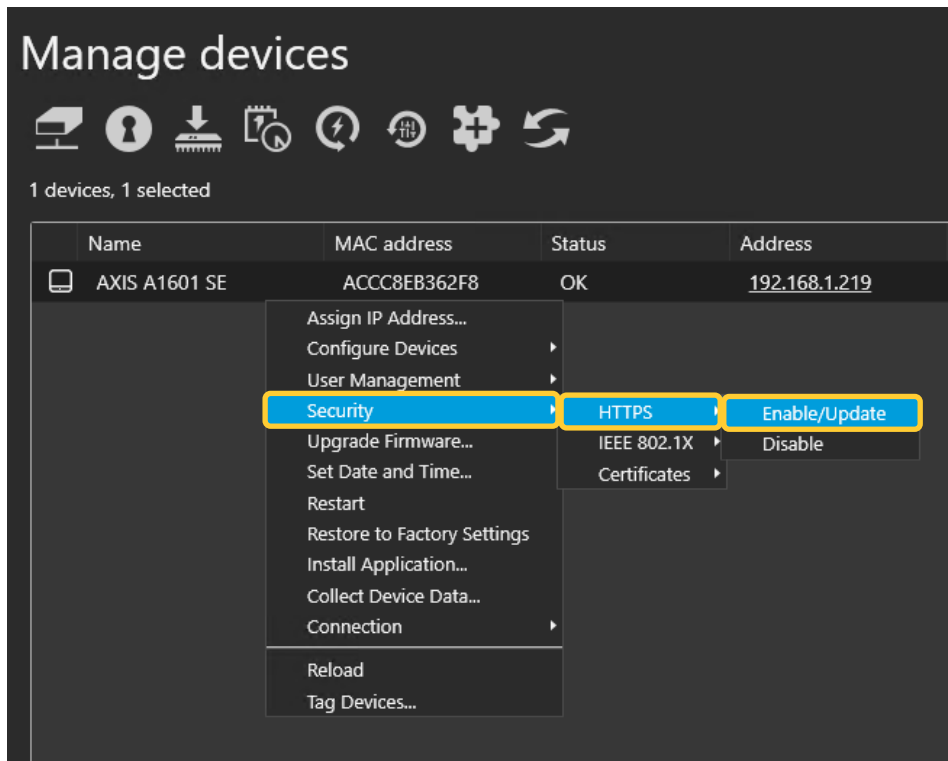
1. In Axis Camera Station open the configuration tab via the “+” symbol found at the top of the screen.
2. From the left menu select “Devices” and under this drop-down select “Management”
3. From this page hold “ctrl” and select the devices, once selected press the update firmware button.
4. In the popup select the latest firmware in the list for each device (for the A1601 ensure to select the latest Secure Entry track) and press “OK”
5. The update can be monitored via the “tasks”



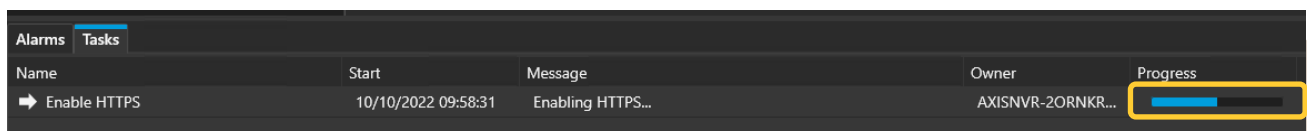
To setup the devices

Follow these steps to setup your devices:

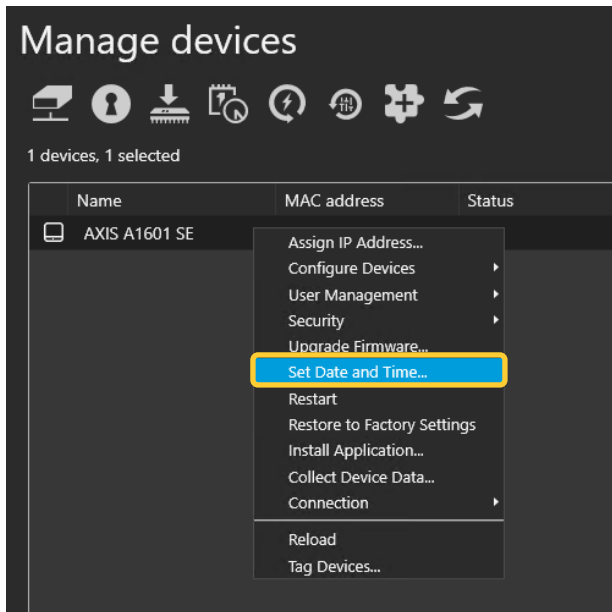
1. In Axis Camera Station open the configuration tab via the “+” symbol found at the top of the screen.
2. From the left menu select “Devices” and under this drop-down select “Management”
3. Right click on the device and select “Security – HTTPS – Enable/Update”



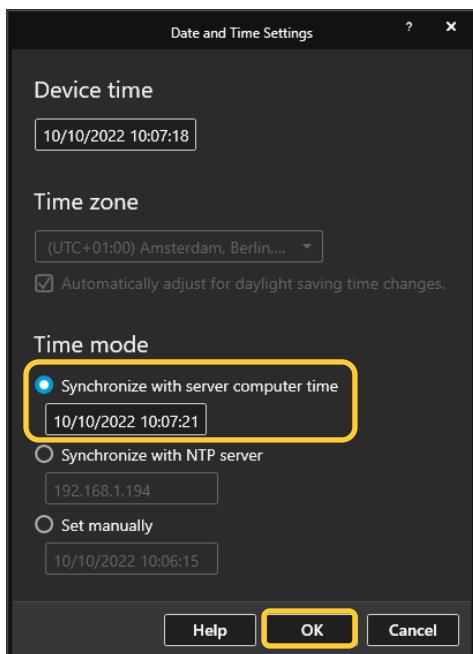
4. This will create a task in the task and alarms, once this has completed, HTTPS is enabled on this device.



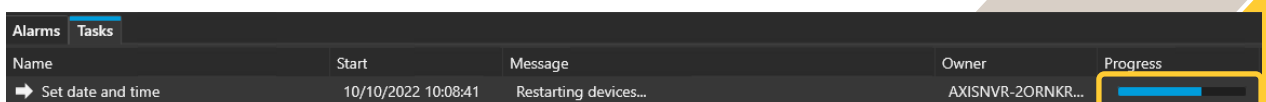
- Next to setup is the time & date on the device, we do this but right clicking on the device in Devices – Management and selecting “Set Date and Time...”



- In the pop-up select yes, In the next pop-up under “Time Mode” choose the first option, “Synchronize with server computer time”



- This will then add a task in the task and alarms, once completed the time will now be synched with the computer server time.



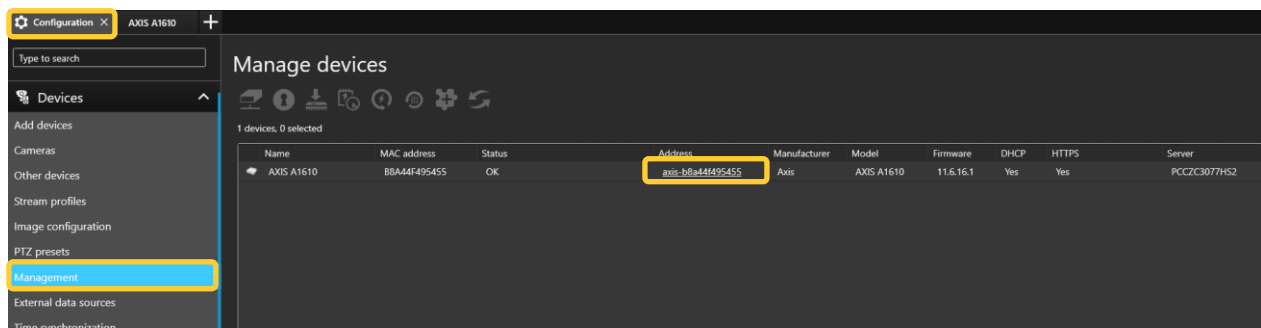
Step 2 – Connecting the Aperio Hub and wireless locks

These steps will show you how to connect the wired Aperio hub and wireless locks configured.

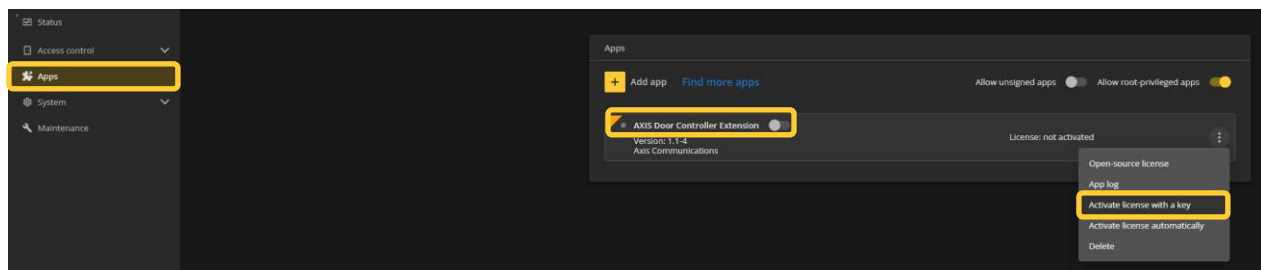
To connect the devices

Follow these steps to connect the hub and locks:

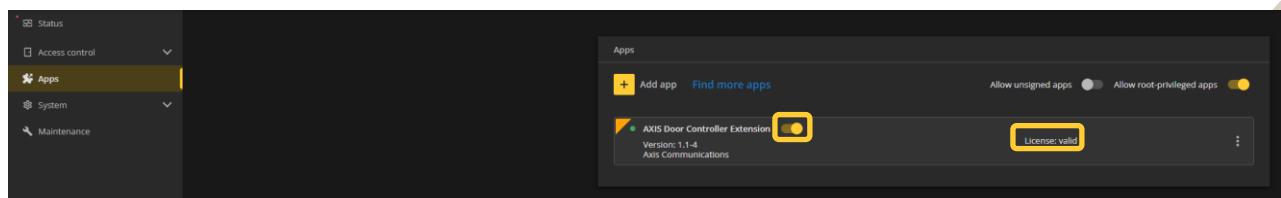
1. In Axis Camera Station open the configuration tab via the “+” symbol found at the top of the screen.
2. Select Devices – Management and in the list click on the IP/address link on the controller you have connected to the Aperio™ Hub.



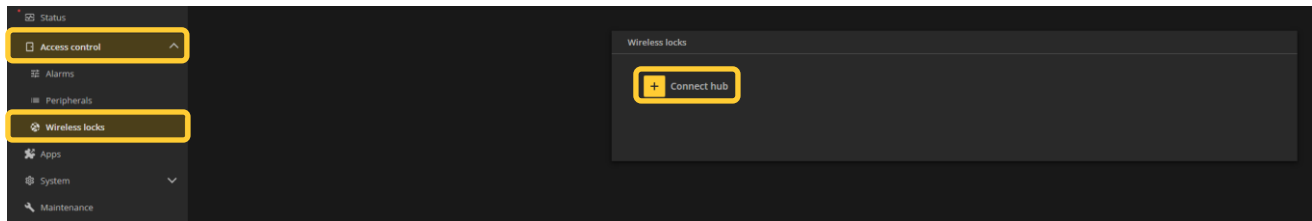
3. In the new webpage tab for the controller select “Apps” here you will find the “AXIS Door Controller Extension” click on the three dots right of the application and select activate license, in the popup you can then select your license you have purchased.



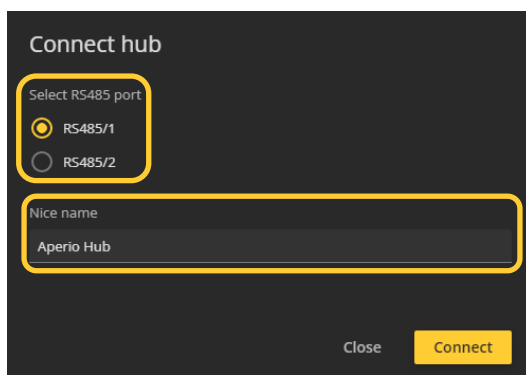
4. Once the license is activated start the application via the toggle switch.



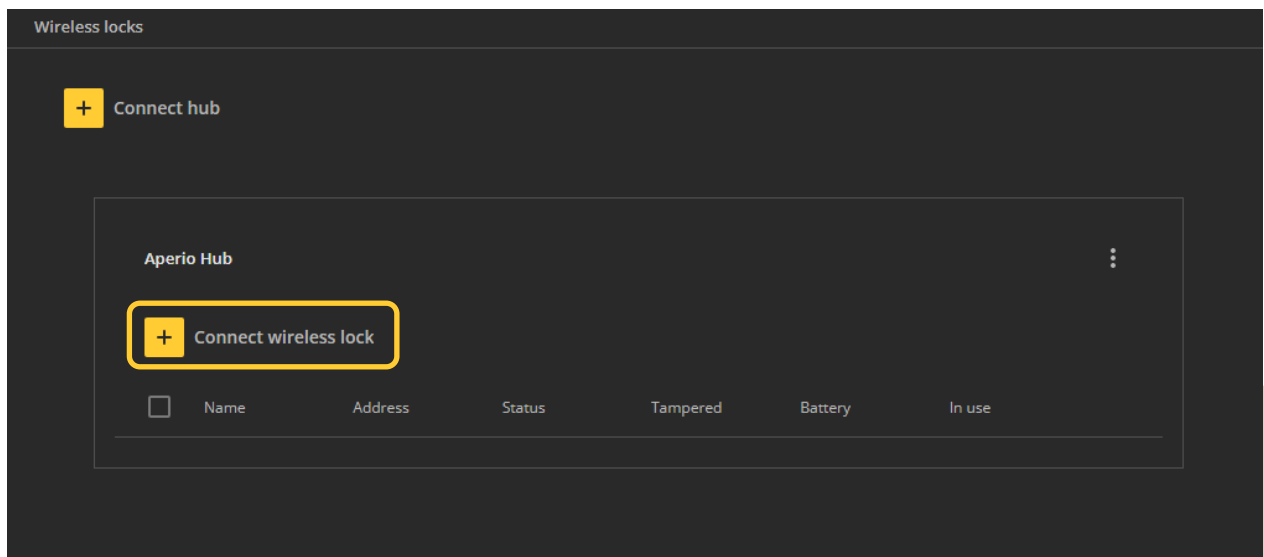
5. Next in the options go to Access control – Wireless locks, in the new page click on the “+ connect hub”



6. In the pop-up window select the RS485 port that has the Aperio hub connected, you can then choose if you wish to give the hub a “nice name”.



7. After you will see the option to connect the locks you have paired already via the Aperio application by clicking the “+ Connect wireless lock”



8. In the next pop-up select the lock address from the drop-down, once selected you can give this lock a “nice name” and using the tick options below enable any functions the chosen lock has, then click save, you can repeat this for all locks that will be connected to this hub.

Connect wireless lock

Lock address
1A0354

Nice name
Aperio Lock

Capabilities

- Lock
- Reader
- Door position sensor
- Door handle detection

Select the capabilities for your current lock to access them in the door configuration.

Cancel Save

9. Once you have added all your locks to the hub you will see them on the webpage with the current status.

Wireless locks

+ Connect hub

Aperio Hub

+ Connect wireless lock

<input type="checkbox"/>	Name	Address	Status	Tampered	Battery	In use
<input type="checkbox"/>	Aperio Lock	1A0354	Online	No	OK	No

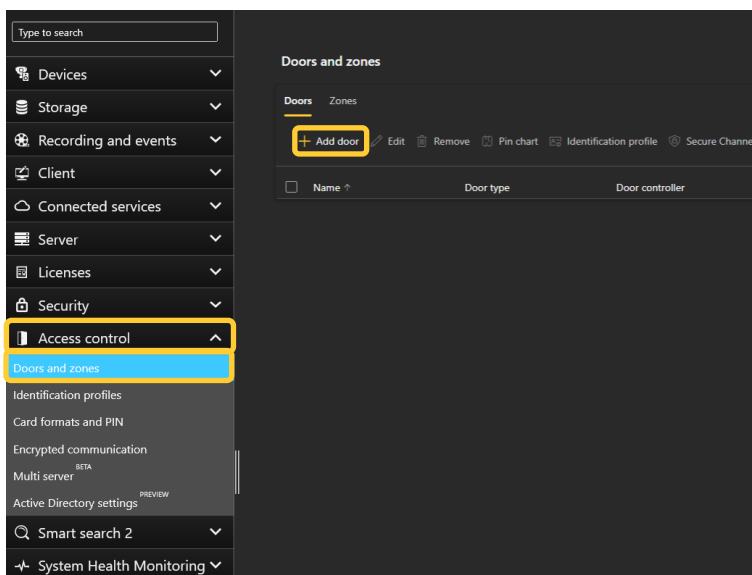
Step 3 – Creating doors with wireless locks

These steps will show you how to connect create wireless doors with the controller used in the previous steps.

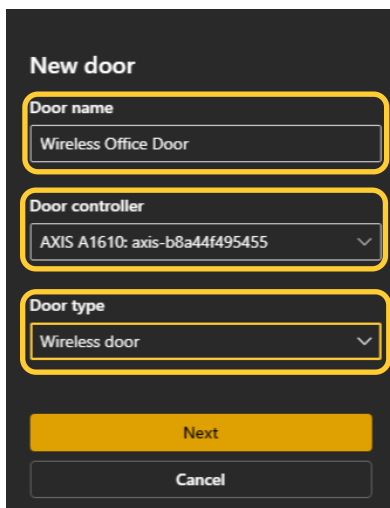
To create doors

Follow these steps to create doors:

1. In Axis Camera Station open the configuration tab via the “+” symbol found at the top of the screen.
2. Expand the “Access control” section and select “Doors and zones” in this page select the “+ Add door” button.



3. In the pop-up give the door a name, select the controller via the dropdown and door type as “wireless Door” then press next.



4. On the next page under Overview card, select the wireless lock you paired with the hub via the dropdown. And choose the identification profile you wish to use with the door, you can create a custom identification profile. (Please visit the User Manual for how to create this)

Doors > New door

Overview Door settings ⓘ

Door controller: AXIS A1610 | IP address: axis-b8a44f495455 | Door type: Wireless door

Door name: Wireless Office Door

Wireless lock: Aperio Lock

Identification profile: Card

5. Depending on the functions of your lock, using the cards you can any sensors such as a wireless door monitor, then via the sides add the wireless reader and door handle detection (if capable). Once you have configured the required settings click save top left.

Doors > New door

Overview Door settings ⓘ

Door controller: AXIS A1610 | IP address: axis-b8a44f495455 | Door type: Wireless door

Door name: Wireless Office Door

Wireless lock: Aperio Lock

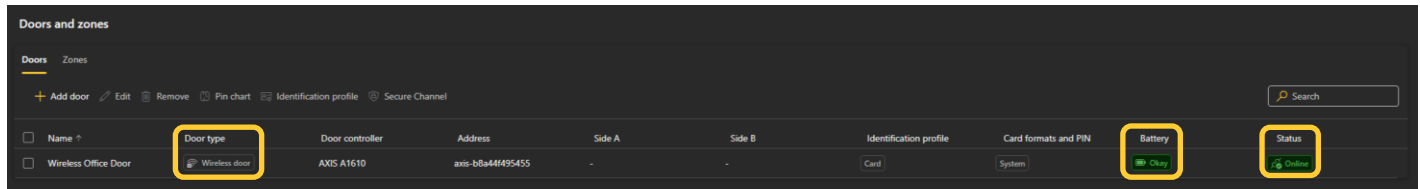
Identification profile: Card

Sensors: Add Edit Remove

Side A: Add Edit Remove

Side B: Add Edit Remove

6. On the Doors and zones overview page you can now see the configured wireless door, this page also displays the battery status of the lock and if the lock is currently online or offline.



For more information on how to configure access management please see the user manual found at [AXIS.com](https://www.axis.com)

Considerations and limitations

- License required for Aperio functionality via the AXIS Door Controller Extension application.
- AXIS door controllers only support the AH30 Wired hub.
- Up to 16 wireless locks per controller.
- Locks required to be configured to the Aperio Hub via Aperio's software prior to following this guide.
- Up to 2 Aperio Hubs per controller.