

AXIS W110 Body Worn Camera

Made for a safer workplace

AXIS W110 Body Worn Camera is a lighter, friendlier wearable camera for protecting staff and reducing bad behavior. It brings the benefits of wearable cameras to the workplace in sectors like retail, healthcare, transportation, and more. AXIS W110 Body Worn Camera deters, protects, and documents. Wearers and the public feel they're not alone, which contributes to a sense of well-being and a more peaceful workplace. AXIS W110 Body Worn Camera offers excellent image and audio quality with exceedingly sharp images and clear audio for forensic usability. The system features signed firmware and video, secure key storage, and true end-to-end encryption to ensure video integrity.

- > [Lightweight and compact](#)
- > [Excellent image quality with electronic image stabilization](#)
- > [Flexible mounting options](#)
- > [Voice feedback](#)
- > [Open standards for easy integration](#)

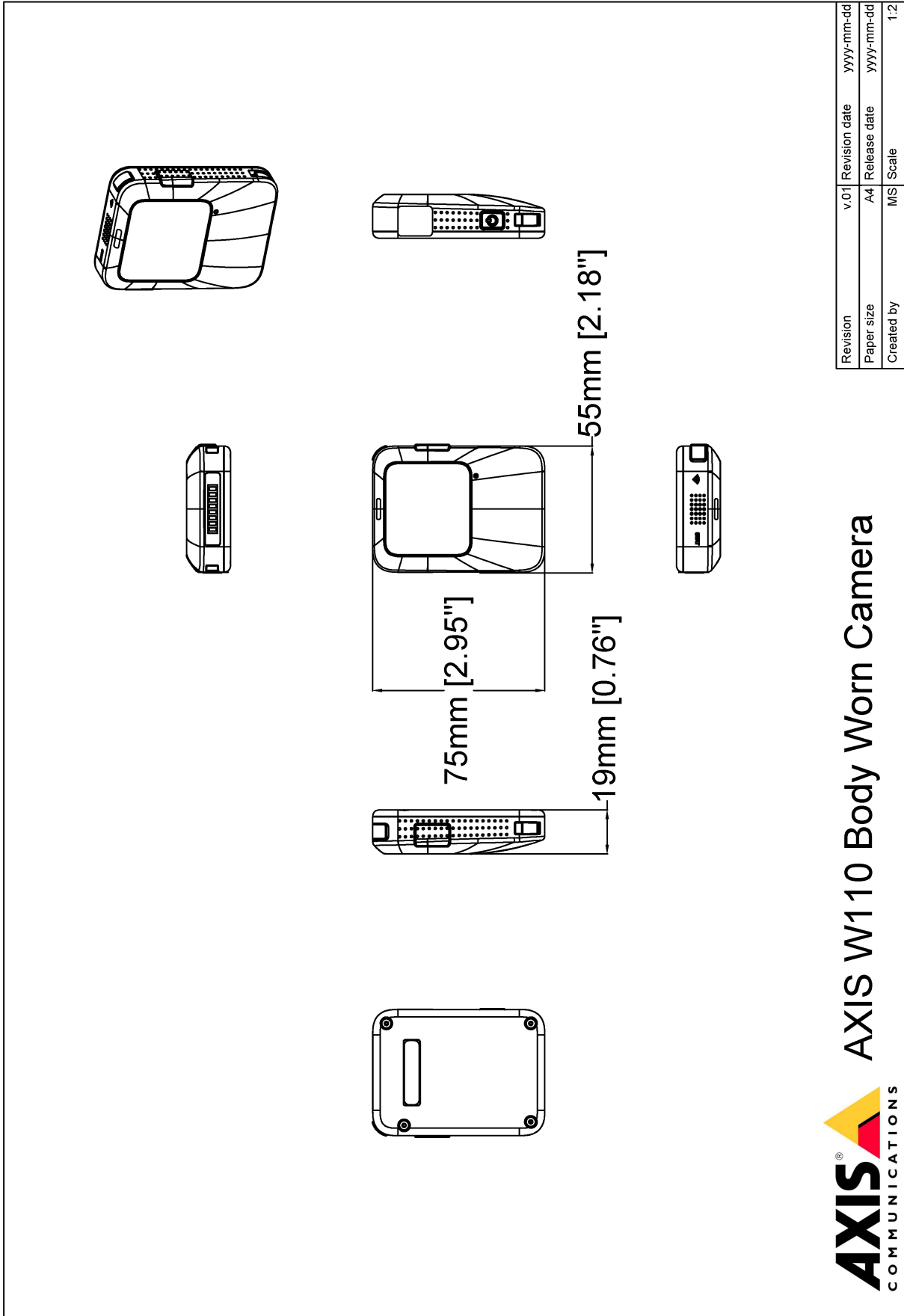


AXIS W110 Body Worn Camera

Camera		Configurable audio and video postbuffer 0, 10, 30, and 60 seconds
Image sensor	1/2.8" progressive scan RGB CMOS Sensitivity: 0.1 lux	Sensor 6-axis gyroscope, accelerometer
Lens	Focal length, 1.9 mm Horizontal field of view: 140° (1080p), 112° (720p) Vertical field of view: 91° (1080p), 62° (720p) Fixed iris, F2.2	User interface Status indicators Audio, voice, and vibration feedback
Shutter speed	1/22000 s to 1/25 s with 50 Hz 1/22000 s to 1/30 s with 60 Hz	Wireless interface Bluetooth® 5.1 Low Energy and Classic Wi-Fi® 5 a/b/g/n/ac @ 2.4 GHz, 5 GHz
Video		Casing IP54-rated Plastic casing Drop tested up to 1.5 m
Video compression	H.264 (MPEG-4 Part 10/AVC) High Profile	Color Black NCS S 9000-N Gray NCS S 2502-B
Resolution	1920x1080, 1280x720	Connectors Pogo pin pads
Frame rate	25 fps at 50 Hz 30 fps at 60 Hz	Operating conditions Temperature: -20 °C to 45 °C (-4 °F to 113 °F) Maximum temperature (intermittent, <1 hour): 50 °C (122 °F) Humidity: 10–100% RH (condensing)
WDR	WDR	Charging conditions Temperature: 0 °C to 35 °C (32 °F to 95 °F) Charging time: <7.5 hours in 0–15 °C (32–59 °F) <4 hours in 15–30 °C (59–86 °F) <6.5 hours in 30–35 °C (86–95 °F) Humidity: 5–95% RH (non-condensing)
Image settings	Electronic image stabilization (720p), barrel distortion correction	Storage conditions Temperature: < 1 month: -20 °C to 45 °C (-4 °F to 113 °F) < 3 months: -20 °C to 35 °C (-4 °F to 95 °F) > 3 months: 0 °C to 25 °C (32 °F to 77 °F) Optimal temperature: 25 °C (77 °F) Humidity: 5–95% RH (non-condensing)
Video streaming	Axis Zipstream for body worn	Dimensions For the overall product dimensions, see the dimension drawing in this datasheet.
Audio		Weight 85 g (0.19 lb) 117 g (0.26 lb) with AXIS TW1106 Magnet Mount
Audio encoding	AAC-LC	Included accessories AXIS TW1106 Magnet Mount
Audio input/output	Built-in microphone, built-in speaker	Optional accessories AXIS TW1107 Magnet Mount Klick Fast™ System for Body worn camera mounts AXIS Body Worn Assistant app for Android, iOS For more accessories, see axis.com/bodyworn
Functionality	Voice enhancement	Warranty The product, including the battery, is subject to a 3-year warranty period, in accordance with the terms and conditions stated in Axis 5 Year Limited Hardware Warranty available on axis.com/warranty ("3-year Warranty Period"). In addition to the terms and conditions in the Axis 5 Year Limited Hardware Warranty, the warranty doesn't cover battery degradation if the battery has undergone more than 500 charge cycles, if the camera has been used or stored in temperatures outside the specifications in the datasheet, or if the instructions in the product's user manual haven't been followed. Replacement of the battery during the 3-year Warranty Period carried out by any other party than Axis (or an RMA partner on behalf of Axis) will void the main item's warranty. Contact Axis Support or your reseller for battery- or service-related matters.
Approvals		Sustainability
Supply chain	TAA compliant	Substance control PVC free, BFR/CFR free in accordance with JEDEC/ECA Standard JS709 RoHS in accordance with EU RoHS Directive 2011/65/EU and EN 63000:2018 REACH in accordance with (EC) No 1907/2006. For SCIP UUID, see echa.europa.eu
EMC	EN 55032 Class B, EN 55035, EN 61000-6-1, EN 61000-6-2 Australia/New Zealand: RCM AS/NZS CISPR 32 Class B Canada: ICES-3(B)/NMB-3(B) Japan: VCCI Class B Korea: KS C 9835, KS C 9832 Class B USA: FCC Part 15 Subpart B Class B	Environmental responsibility axis.com/environmental-responsibility Axis Communications is a signatory of the UN Global Compact, read more at unglobalcompact.org
Safety	CAN/CSA C22.2 No. 62368-1 ed. 3, IEC/EN/UL 62368-1 ed. 3, RCM AS/NZS 62368.1:2018, IS 13252	
Environment	IEC 60068-2-1, IEC 60068-2-2, IEC 60068-2-14, IEC 60068-2-27, IEC 60068-2-78, IEC/EN 60529 IP67	
Wireless	EN 300328, EN 300440, EN 301893, EN 301489-1, EN 301489-17, FCC Part 15 Subpart C, RSS-247	
Cybersecurity	ETSI EN 303 645, BSI IT Security Label	
Cybersecurity		
Edge security	Software: Signed OS, AES-XTS-Plain64 256bit encryption Hardware: Secure boot, Axis Edge Vault with Axis device ID, signed video, secure keystore (CC EAL6+ certified hardware protection of cryptographic operations and keys). CJIS compliant encrypted internal storage (AES256)	
Network security	IEEE 802.1X (EAP-TLS, PEAP-MSCHAPv2), IEEE 802.1AR, HTTPS/HSTS ^a , TLS v1.2/v1.3 ^b	
Documentation	Axis body worn cameras – system security white paper, available at axis.com/learning/white-papers <i>Axis Vulnerability Management Policy</i> <i>Axis Security Development Model</i> AXIS OS Software Bill of Material (SBOM) To download documents, go to axis.com/support/cybersecurity/resources To read more about Axis cybersecurity support, go to axis.com/cybersecurity	
General		
Battery	Li-ion, 1600 mAh Up to 7 hours operating time in 720p ^c Up to 5.5 hours operating time in 1080p ^d Up to 11.5 hours in standby mode ^e	
Storage	128 GB non-volatile memory, up to 45 hours of recorded video AES256 encryption standard	
Throughput	Camera to system controller: 100 Mbit/s	
Recording	Configurable audio and video prebuffer 0, 15, 30, 60, 90, and 120 seconds	
		<p>a. This product includes software developed by the OpenSSL Project for use in the OpenSSL Toolkit. (openssl.org), and cryptographic software written by Eric Young (ey@cryptsoft.com).</p> <p>b. This product includes software developed by the OpenSSL Project for use in the OpenSSL Toolkit. (openssl.org), and cryptographic software written by Eric Young (ey@cryptsoft.com).</p> <p>c. With pre-buffer, and fewer than 500 charge cycles.</p> <p>d. With pre-buffer, and fewer than 500 charge cycles.</p>

e. *Without pre-buffer, and including 1 hour of recording per charge in 720p, and fewer than 500 charge cycles.*

Dimension drawing



© 2023 Axis Communications

AXIS COMMUNICATIONS
www.axis.com
AXIS W110 Body Worn Camera