

AXIS Camera Station S9301 Workstation

Flexible, plug-and-play workstation

Extensively tested and validated with a wide range of Axis products, this flexible workstation can be used either as a client when connected to the server, or as a server when used in combination with AXIS S30 Series. It supports up to two 4K resolution monitors for optimal overview. With a micro form factor, it's ideal wherever space is limited. It comes preloaded with AXIS Camera Station client software. Plus, the integrated AXIS Recorder Toolbox installation wizard ensures quick and easy installation. Furthermore, it includes next business day on-site hardware replacement, 5-year warranty, and one point-of-contact for support.

- > [Scalable and powerful solution](#)
- > [Supports up to two 4K monitors](#)
- > [AXIS Camera Station client software included](#)
- > [Extensive support and 5-year warranty](#)



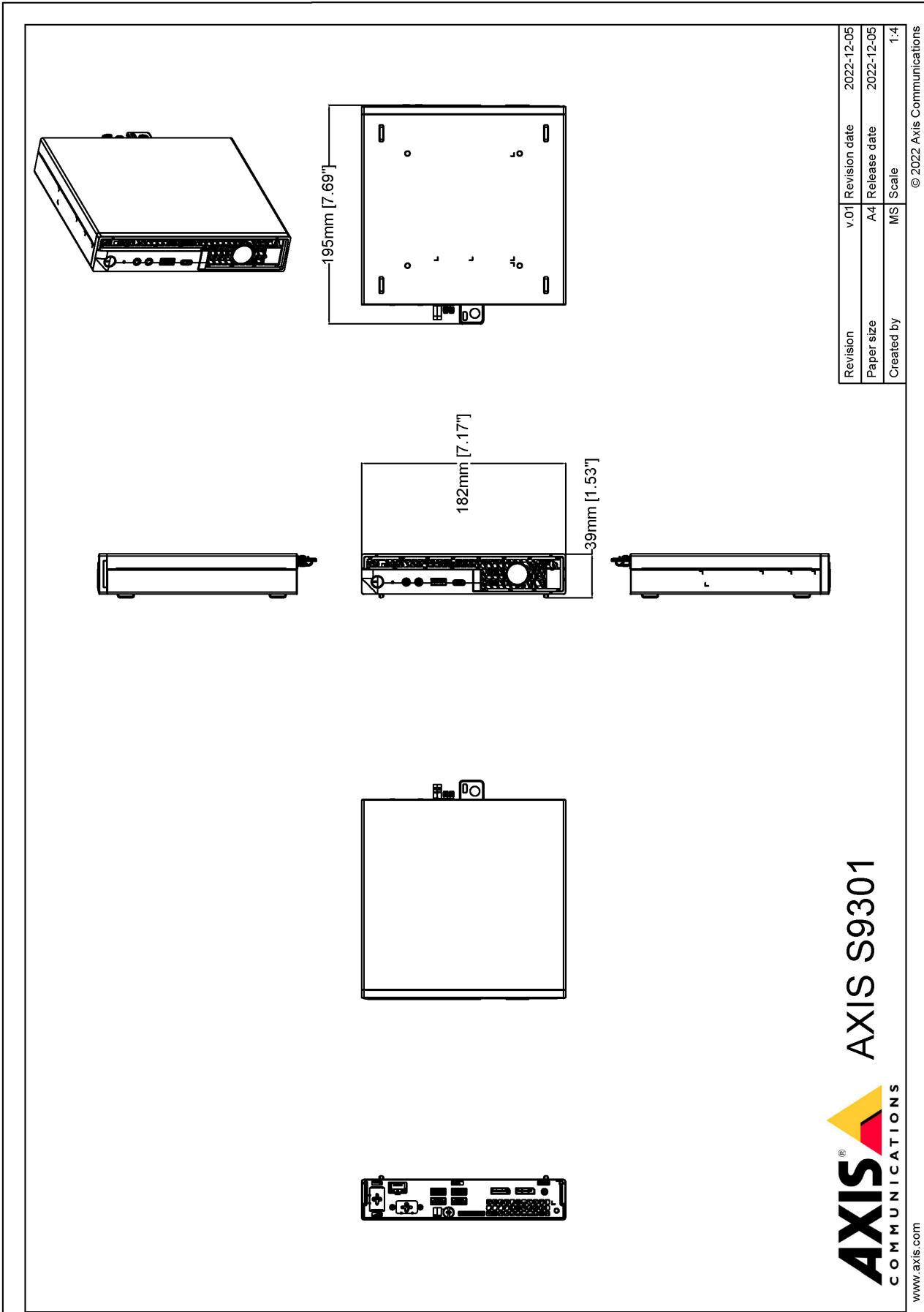
AXIS Camera Station S9301 Workstation

Hardware	
Processor	Intel® Core™ processor
Memory	16 GB (2x 8 GB) ^a
Graphics card	Intel® UHD graphics
Power	Max 90 W, 100–240 V AC, 1.5 A 50/60 Hz, 19,5 V DC, 4,62 A External AC/DC adapter
Connectors	Front side: 1x Audio line in/out 1x Universal audio jack 1x USB 3.2 1x USB 3.2 gen 2 2x2 USB-C port Rear side: 1x RJ45 Ethernet 4x USB 3.2 2x DisplayPort™ 1.4a
Video	
Video streaming	Live view: 1 stream x 4K at 30 fps 4 split x 1080p at 30 fps 9 split x 720p at 30 fps 16 split x 360p at 15 fps 25 split x 360p at 15 fps 36 split x 360p at 15 fps Any combination of the above for maximum two 4K monitors where only one monitor can show streams at 30 fps. Playback: Supports the same split scenarios as for live view. Playback at high speeds can affect the video performance.
Approvals	
Supply chain	TAA compliant
EMC	EN 55032 Class B, EN 55035, EN 61000-3-2, EN 61000-3-3, FCC Part 2 & 15 Class B, ISED ICES-003 Class B, RCM AS/NZS CISPR 32 Class B, KS C 9832 Class B, KS C 9835, VCCI 32-1 Class B, BSMI
Safety	IEC/EN/UL 62368-1, EN 62311, NOM-019-SCFI-1998
Cybersecurity	FIPS 140
Cybersecurity	
Documentation	<i>AXIS Camera Station Hardening Guide</i> <i>Axis Vulnerability Management Policy</i> <i>Axis Security Development Model</i> To download documents, go to axis.com/support/cybersecurity/resources To read more about Axis cybersecurity support, go to axis.com/cybersecurity
General	
Operating system	Microsoft® Windows® 10 IoT Enterprise LTSC 2021 Built-in operating system recovery: yes Operating system drive: 256 GB SSD
Security	Support for encrypted operating system drive FIPS 140-2 level 2 certified Trusted Platform Module (TPM 2.0)
Operating conditions	0 °C to 45 °C (32 °F to 113 °F) Humidity 20–80% RH (non-condensing)
Storage conditions	–40 °C to 65 °C (–40 °F to 149 °F) Humidity 5–95% RH (non-condensing)
Dimensions	182 x 36 x 178 mm (7.2 x 1.4 x 7.0 in)
Weight	1.1 kg (2.4 lbs)
Included accessories	AC power adapter with wall plug power cord
Optional accessories	Axis joysticks and control boards For more accessories, see axis.com
Services	Next Business Day Onsite Support
Warranty	5-year warranty, see axis.com/warranty
Export control	This product is subject to export control regulations, and you should always comply with all applicable national and international export or re-export control regulations.

a. Units produced prior to September 1, 2024: 8 GB (2x 4GB)

AXIS Camera Station

For details about AXIS Camera Station features and functions, see the AXIS Camera Station datasheet on axis.com



Revision	v.01	Revision date	2022-12-05
Paper size	A4	Release date	2022-12-05
Created by	MS	Scale	1:4

© 2022 Axis Communications

AXIS[®] COMMUNICATIONS
www.axis.com
AXIS S9301