



Perform
forensic search

How to guide

6.5

Customizing metadata and search

AXIS Optimizer for Milestone XProtect®

AXIS[®]
COMMUNICATIONS

Step-by-step:

Customizing metadata and search

AXIS Optimizer metadata and search control panel allows users to control all metadata and forensic search capabilities. Fully customizable, settings can be turned on and off for event data, analytics data, consolidated metadata, as well forensic search filters for each device in the system. It's also possible to view the video analytics features that each device currently supports. And admin roles can control operator access to the different filters available in the range of forensic search alternatives including objects, vehicles, freight containers, and zone speed infractions.

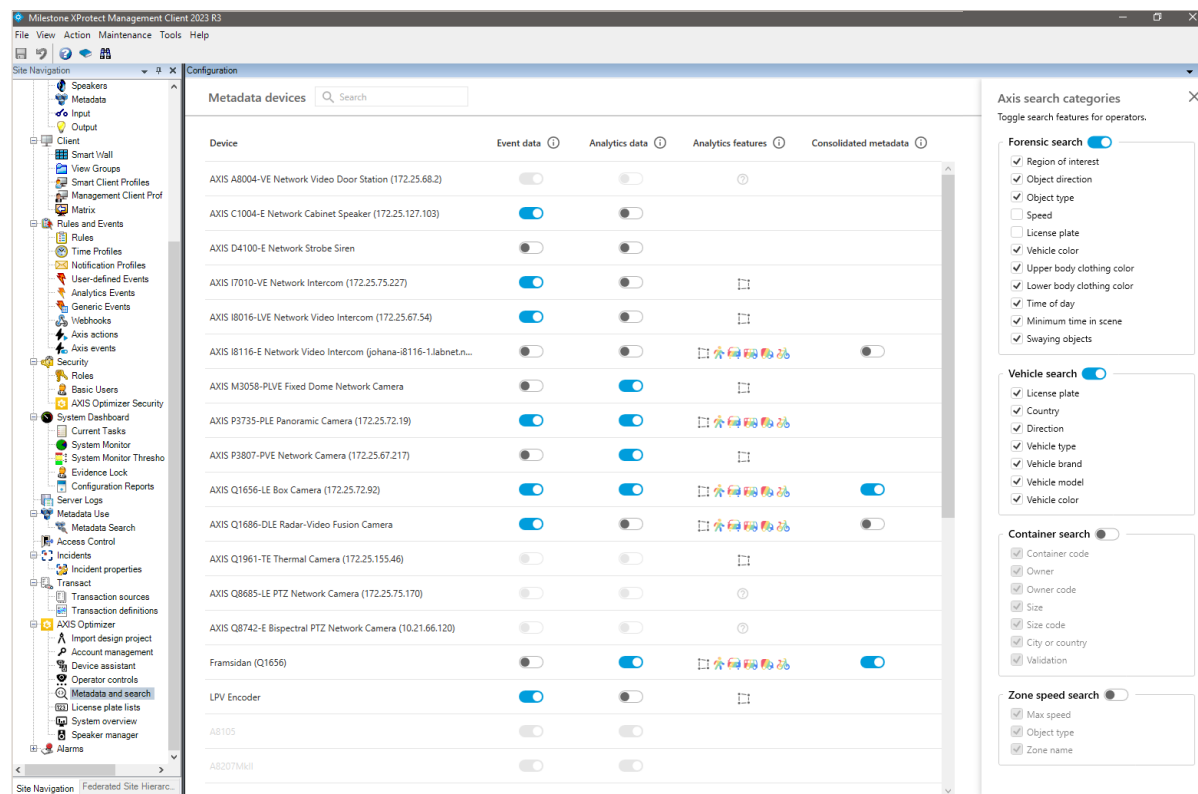
Requirements

- Install your choice of Milestone XProtect 2022 R2 or later:
 - Milestone XProtect Express+
 - Milestone XProtect Professional+
 - Milestone XProtect Expert
 - Milestone XProtect Corporate
 - Milestone XProtect Essential+
- Install the latest version of AXIS Optimizer on the Management Client
- Axis devices running AXIS OS 10.6 with either an MLPU or DLPU can generate object classification metadata. Please refer to the device for details about its supported object classes and attributes.
- Axis device with scene analysis enabled
- Device time must be synchronized with NTP

How to work with metadata settings

Use the metadata and search control panel to configure metadata settings for AXIS Optimizer.

1. Go to Management Client > Site Navigation > AXIS Optimizer > Metadata and search.

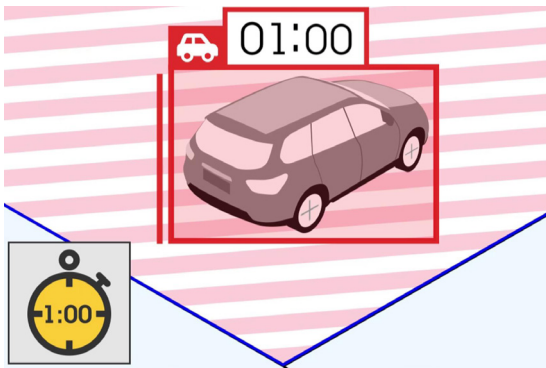


Here you can turn on event data, analytics data, as well as consolidated data for multiple devices. You can also see which analytics features are supported by your devices, and grant or deny access to all filters available in the range of AXIS Optimizer forensic search alternatives.

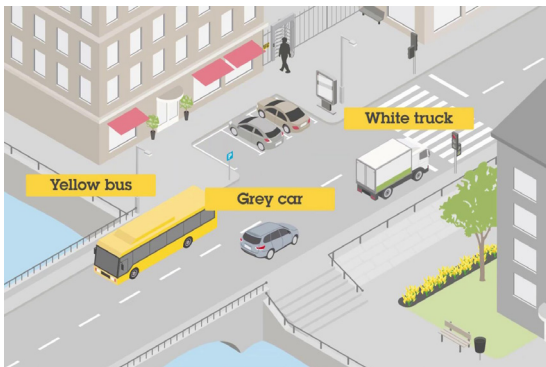
About analytics metadata streams from Axis devices

In addition to video and audio streams, Axis devices deliver analytics metadata streams. These metadata streams describe the events, content, and characteristics of a scene including event data and scene metadata.

Event data: This is logical rules based on what has occurred in a scene. For example, when a person crossing a line is counted or a vehicle is dwelling in an area it should not be.



Scene metadata: This describes which objects are in the scene (such as humans and vehicles), their attributes, travel paths, speed*, license plates*, geocoordinates locations, and position.



Analytics metadata has become increasingly important for gaining scene understanding while ensuring timely, accurate actions in security, safety, and business operations. That's because it adds details and gives greater digital meaning to each video frame.

*Speed and license plate metadata is only supported for AXIS Q1686-DLE Radar-Video Fusion Cameras.

What you can customize

- > **Analytics data:** Turn on to use the forensic search feature and show bounding boxes in live view and playback.
- > **Analytics features:** View the video analytics features that your device currently supports such as object type (humans, cars) and object color.
Note: Upgrading the device software may give more analytics features. Please refer to each device's datasheet for details about supported object classes and attributes.
- > **Consolidated metadata:** Turn on to accelerate forensic search investigations
- > **Event data:** Turn on to allow the VMS to retrieve event data from the device. This step needs to be performed for several features in AXIS Optimizer.

Enable consolidated metadata

By turning on consolidated metadata**, it's possible to accelerate forensic search investigations by up to 50%, compared to frame-by-frame processing. Consolidated metadata significantly reduces the total amount of data being gathered, transmitted, and sent to the VMS for storage. That's because it only sends summarized (consolidated) data based on when an object enters and exits a scene.

**Consolidated metadata requires Axis devices with AXIS OS 11.10 or later versions. Consolidated metadata known limitations include a lack of bounding boxes in both live and recorded video, and VMS built-in search options are not available.

Support to get you started

Watch AXIS Optimizer how to videos

See online user manual

Download more how to guides

Read AXIS Optimizer getting started guide

Step-by-step workflows for specific jobs-to-be-done may change over time. Please refer to the [online user manual](#) for the latest descriptions.



Efficiently manage metadata and search

Metadata adds details to your video such as keywords describing object classes and attributes, travel paths, geocoordinate locations, and position. This helps enhance scene understanding. And because metadata is processed at the edge, it streamlines operations, reduces server needs, and enhances data analysis and management. However, the sheer amount of data sent from just one camera over a day, hour, or week is extensive. And while metadata makes it easy to find what you're looking for, the vast amount of data captured and sent can result in excessive bandwidth and storage requirements. Having the flexibility to customize different types of metadata can ensure greater efficiency.

How AXIS Optimizer solves this problem

AXIS Optimizer metadata and search control panel lets you easily customize the metadata streamed from specific devices, depending on your needs. For instance, you can choose to stream frame-by-frame metadata and efficiently manage real-time situations. Or choose consolidated metadata to speed up forensic search investigations and reduce bandwidth and storage requirements. It is also possible for admin roles to choose which forensic search filters to make available for operators..

About AXIS Optimizer for Milestone XProtect

AXIS Optimizer is a suite of integrations that optimizes the performance of Axis devices in Milestone XProtect. It ensures all users save considerable time and effort while getting the most out of their Axis and Milestone system. Continuously updated to cover new Axis offerings, it's available for free as a one-time installer on axis.com.

About Axis Communications

Axis enables a smarter and safer world by creating solutions for improving security and business performance. As a network technology company and industry leader, Axis offers solutions in video surveillance, access control, intercom, and audio systems. They are enhanced by intelligent analytics applications and supported by high-quality training.

Axis has around 4,000 dedicated employees in over 50 countries and collaborates with technology and system integration partners worldwide to deliver customer solutions. Axis was founded in 1984, and the headquarters are in Lund, Sweden.