

# **AXIS Camera Station Getting Started**

**Vn 4.0 Updated January 2023**

## Table of contents

<u>1</u>	<u>INTRODUCTION</u>	<u>3</u>
<u>2</u>	<u>USER INTERFACE – LIVE VIEW OVERVIEW</u>	<u>4</u>
<u>3</u>	<u>USER INTERFACE – RECORDINGS</u>	<u>5</u>
<u>5</u>	<u>REPLAY FUNCTIONALITY</u>	<u>6</u>
<u>6</u>	<u>EXPORTING VIDEO</u>	<u>8</u>
<u>7</u>	<u>EXPORT TAB</u>	<u>9</u>
<u>8</u>	<u>EDIT RECORDING</u>	<u>10</u>
<u>9</u>	<u>AXIS FILE PLAYER</u>	<u>12</u>

# 1 Introduction

The following document is to help you get started with using AXIS Camera Station. The document will highlight key features and how to complete common tasks. The areas covered in the getting started guide is the live, replay and export interfaces. Please refer to the manual for more advanced functionality such as using logs, Smart search and hot keys. Note the document is based on Axis Camera Station 5.50 and the interface may change over time.

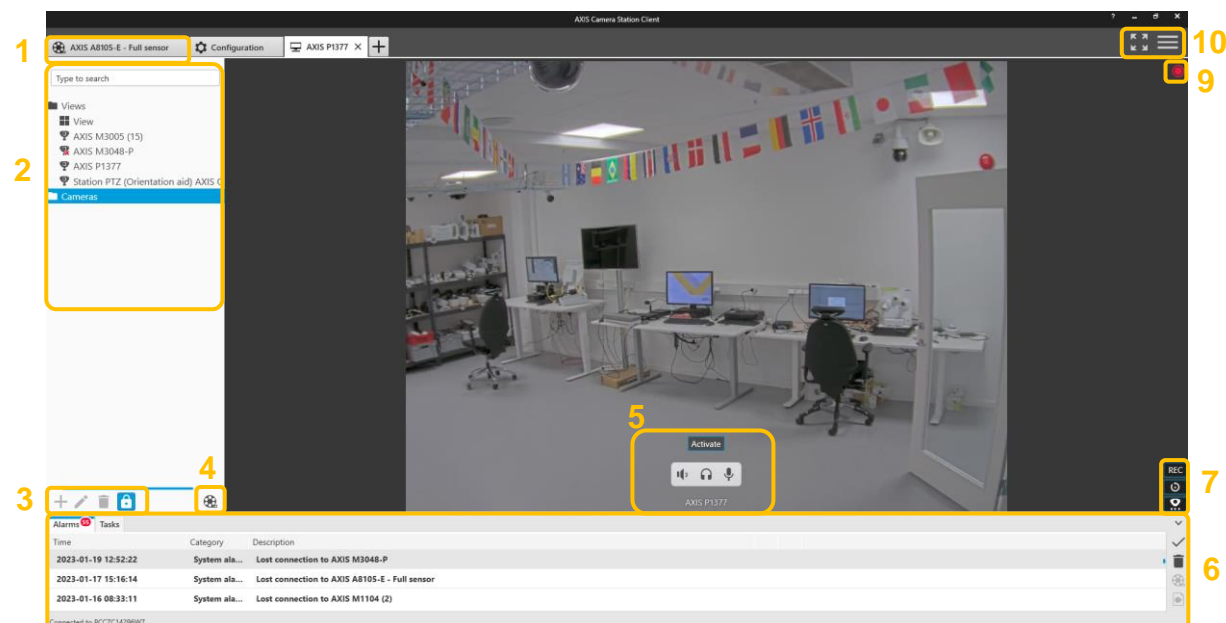
AXIS Camera Station is an intuitive piece of software, and this will help you very quickly become a competent user. When using the software, you can press F1 to be taken to the associated help page.

Also look at the help center for more information including the manual and tutorial videos:  
<https://www.axis.com/products/axis-camera-station/help-center>

The following "getting" familiar video may also be useful for new operators of the software.  
<https://help.axis.com/axis-camera-station-tutorial-videos#get-familiar-with-axis-camera-station>

## 2 User interface – Live view overview

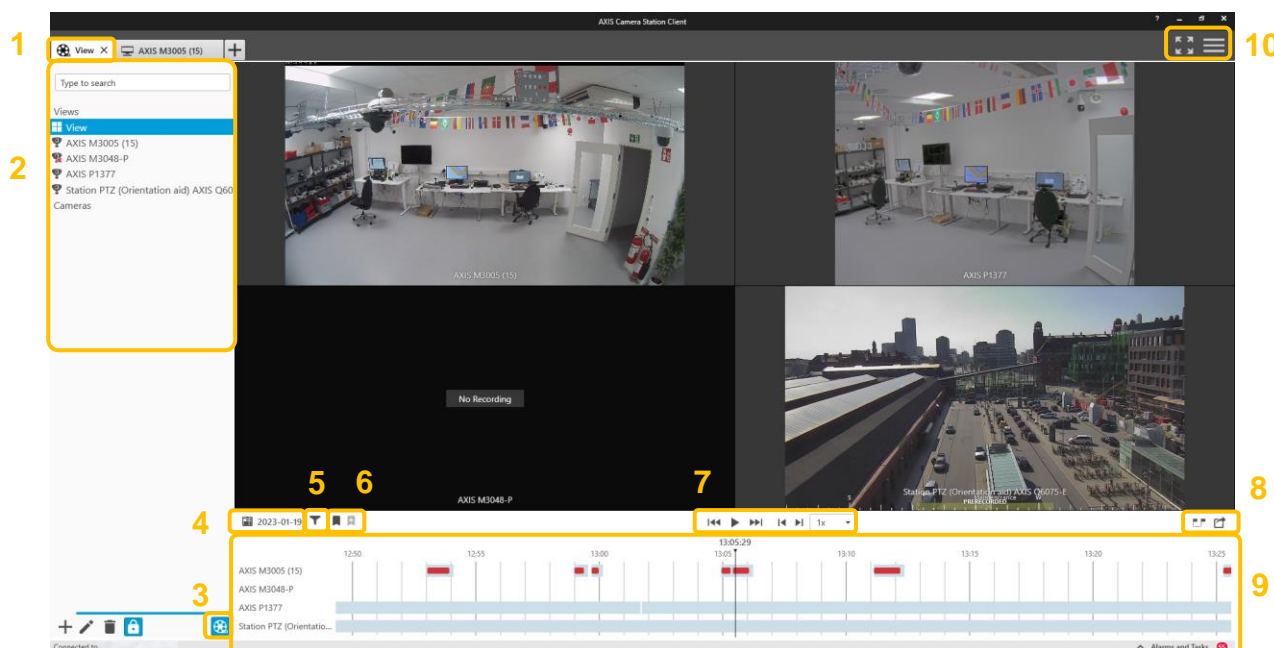
The image below shows the different key functions within the Live view workspace (🖥️). It is recommended you spend some time understanding and become familiar with their operation.



- 1) Tabs are used for live views (identified with the monitor icon 🖥️), recordings, smart search, configuration, hot keys, and logs. Multiple tabs can be opened and can be used for easy access to cameras and functions. The + icon enables you to open a new tab of your choice.
- 2) The “Camera and Views” pane presents the system to the operator. Cameras, Views, Sequences, Maps and Web pages are shown in this space. Simply click on the asset to view it. You can also drag cameras into the viewing pane and select multiple items by holding the ctrl key while making your selection. Place the mouse cursor on a camera name to display an image of that camera for easy identification of the camera view. The search field can be used to quickly find a device you are looking for.
- 3) Add, Edit and Delete views. This is where you can add split views, sequences, and web pages. To add a new view, click on the “view” folder in the pane above and then click on the + icon.
- 4) The replay icon toggles between live and replay for the selected camera(s).
- 5) The camera name is displayed here. Action buttons and audio associated with the camera is also shown here.
- 6) Alarms and notifications are shown in this pane. This informs the operator of important events, if there is an associated recording it will be shown as a film canister. Click on the film canister to view the recording. The alarm events are also shown in the logs.
- 7) On screen controls is used to show device features if supported by the device. The manual recording icon creates a recording in addition to the configured recording profile. The instant replay icon will play back the camera 5 secs from the live view, this is for instant verification of the video content, in a split view the selected pane will replay video while the others remain live.
- 8) The recording indicator visualizes if a recording is ongoing. If a red person is displayed below the recording indicator, motion recording is enabled and ongoing.
- 9) Full screen mode and display main menu which contains addition server connections and the help files.
- 10) PTZ Controls are displayed on PTZ enabled cameras by dragging your mouse in the middle of the liveview, or by right clicking to open the presets menu.

### 3 User interface – Recordings

The image below shows the different key functions within the Recordings workspace (🎬). It is recommended you understand and become familiar with their operation.



- 1) Tabs are used for live views, recordings (identified with the film icon 🎬), smart search, configuration, hot keys, and logs. Multiple tabs can be opened and can be used for easy access to cameras. The + icon enables you to open a new tab of your choice.
- 2) The “Camera and Views” pane presents the system to the operator. Cameras, Views, Sequences, Maps and Web pages can be shown in this space. The “Cameras” tab shows just cameras with thumb nail images for easy identification of cameras. Here three cameras have been selected (hold ctrl and select) and dragged into the main viewing pane which will automatically change to suit the selection.
- 3) Toggle between live and recording workspaces.
- 4) Go to a specific date via the calendar.
- 5) Filter the timeline display. For example, you can use this to show only motion events
- 6) Bookmarks. Bookmarks are used to mark important or interesting pieces of video so that they can be easily found out a later date.
- 7) Controls used to replay the video.
- 8) Export is used to share the video with authorities and third parties. The AXIS File Player is exported with the video and used to replay the video without the need to install additional software.
- 9) The recording timeline. Recording availability is shown as a grey bar. Events are displayed on top of the recording bar in their respective color as displayed in the filter (5).
- 10) Full screen mode and display main menu which contains addition server connections and the help files.

## 5 Replay functionality

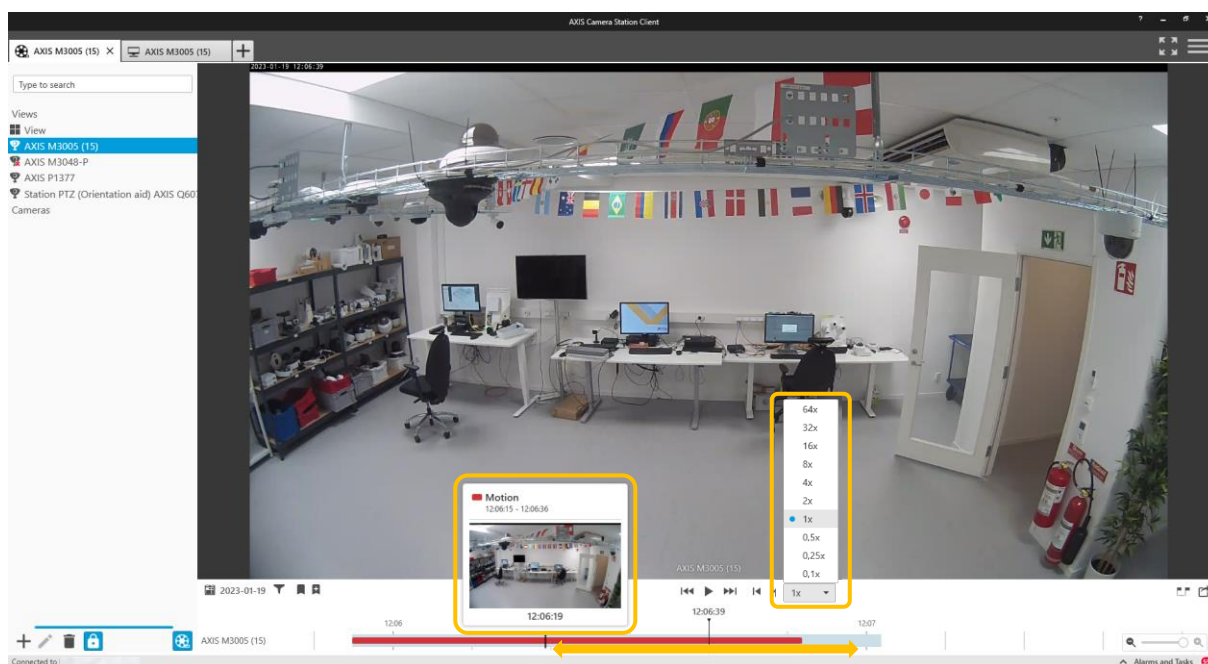
When replaying video, use the controls located above the timeline in the centre of the screen.



Playback controls

The controls are as follows: Jump to previous, Play the recording, Jump to next, Frame backwards, Frame forwards and Playback Speed.

You can also simply drag the timeline to quickly review periods of video. This is known as scrubbing and is an easy way of finding when an event happened such as when a vehicle arrived or left the scene.



Drag the time to scrub the video

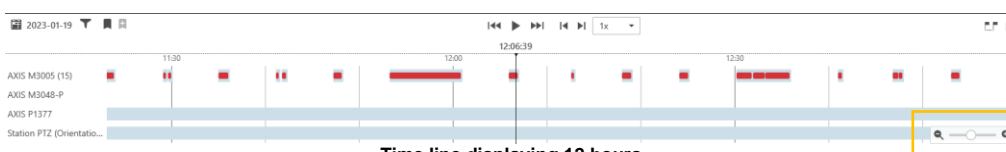
You can also increase and decrease the playback speed but don't forget to return this back to 1x after use which can help review periods of video in a faster manner.

You can hover over the recording bar to see a preview and a mention of the ongoing events at this time.

You can zoom in and out of the time line to observe longer periods or to gain more granular control of the scrubbing function.



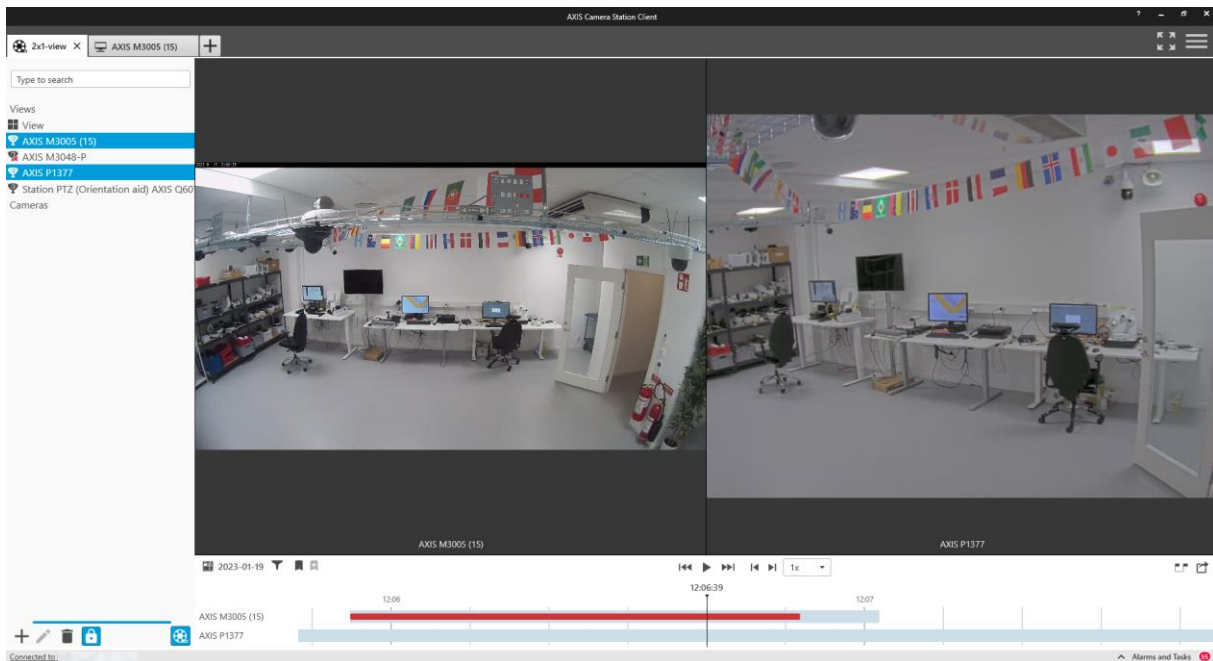
Time line displaying 4 minutes



Time line displaying 12 hours

Zoom in and out of the timeline using a mouse wheel or the zoom controls located in the bottom right of the timeline.

You can select multiple cameras by holding the ctrl key and making your selection, you can then drag the cameras into the viewing pane.



When viewing multiple cameras, they will be synchronized, this is a useful way of reviewing an event which may have been captured on multiple cameras.

The following short video show how the recording timeline can be used to review recorded video:

[https://www.youtube.com/watch?v=qSSCOq\\_5Ov0](https://www.youtube.com/watch?v=qSSCOq_5Ov0)

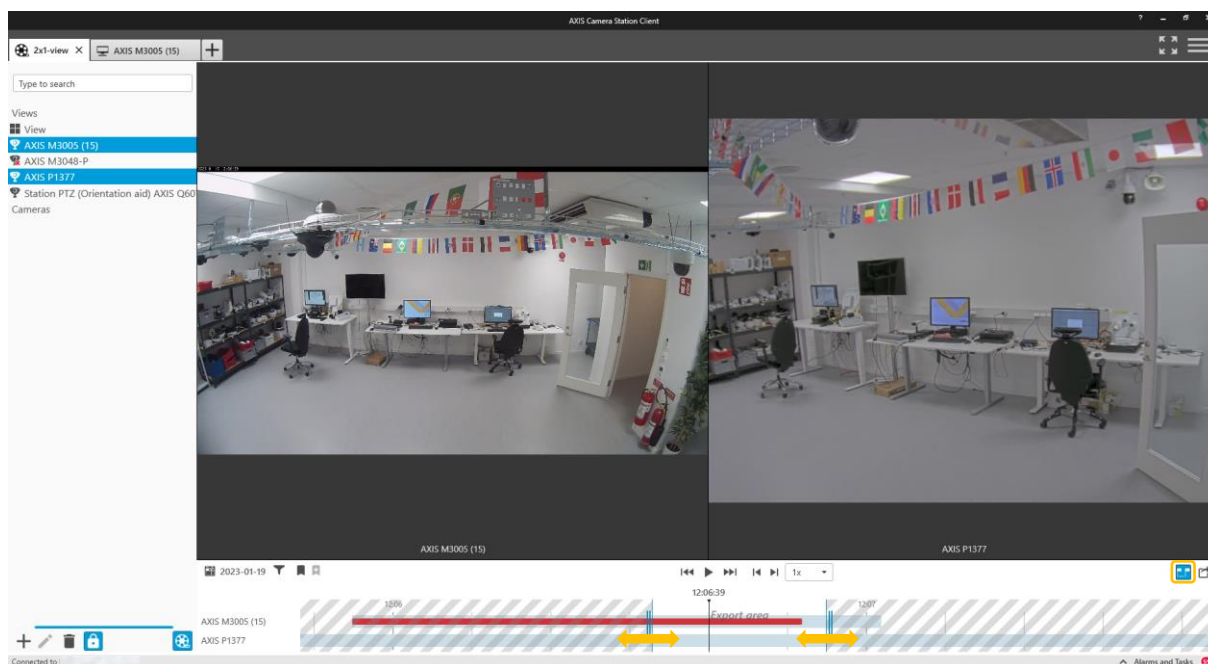


## 6 Exporting video

There are two main methods of exporting video. By using the export markers which is best for exporting a constant recording or by right hand clicking on a recording and selecting export which is generally best for exporting alarm created recordings.

### **Using the export markers**

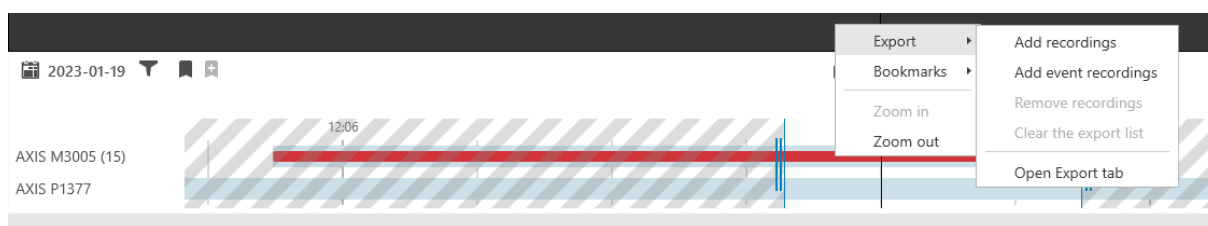
Click on the export markers icon (📅) and drag the markers to contain the desired video to be exported.



Observe how the video changes when you drag the markers showing you the start and end video that will be exported. This makes it simple to select video without entering the date and time information.

### **Right hand click export**

Right hand click on a video clip and select export.

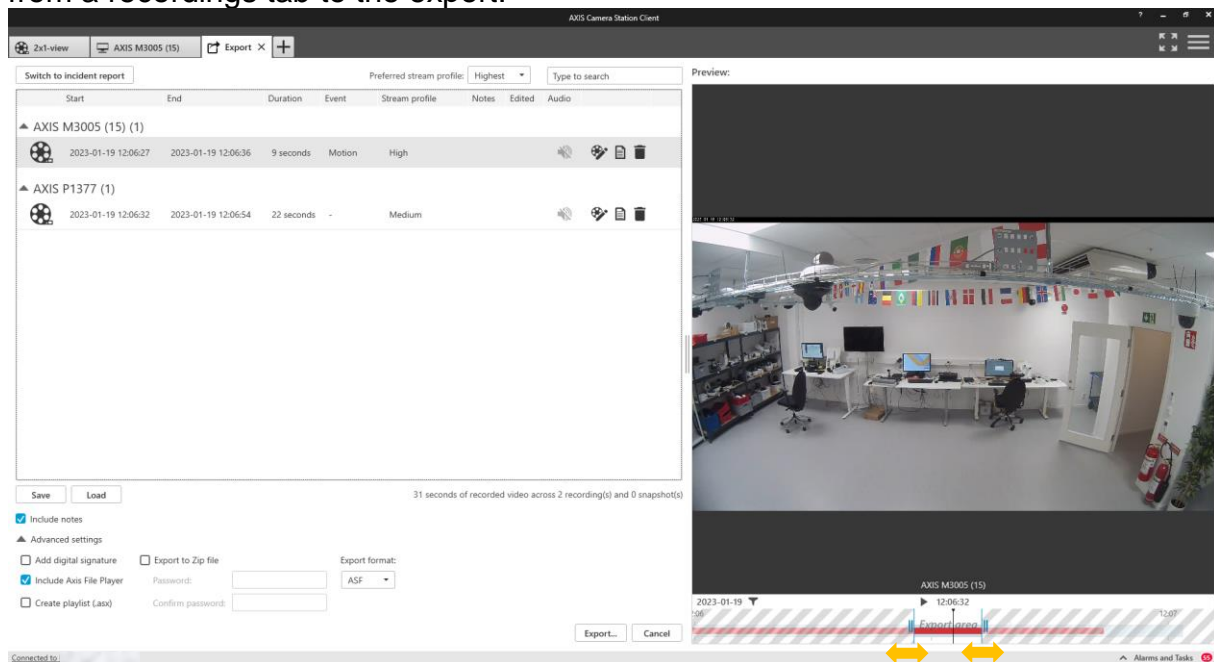


Multiple clips using either method can be selected and added to the export list to build your evidence case.



## 7 Export tab

Once you add video to an export, the export tab (📁) will appear. You can build an export containing multiple cameras from different times. Just keep adding selections from a recordings tab to the export.



Once video has been added to the Export it can be reviewed by selecting a video in the list and then using the player on the right. You can also trim the selection by using the markers. This allows you to check that the correct content has been chosen for export.

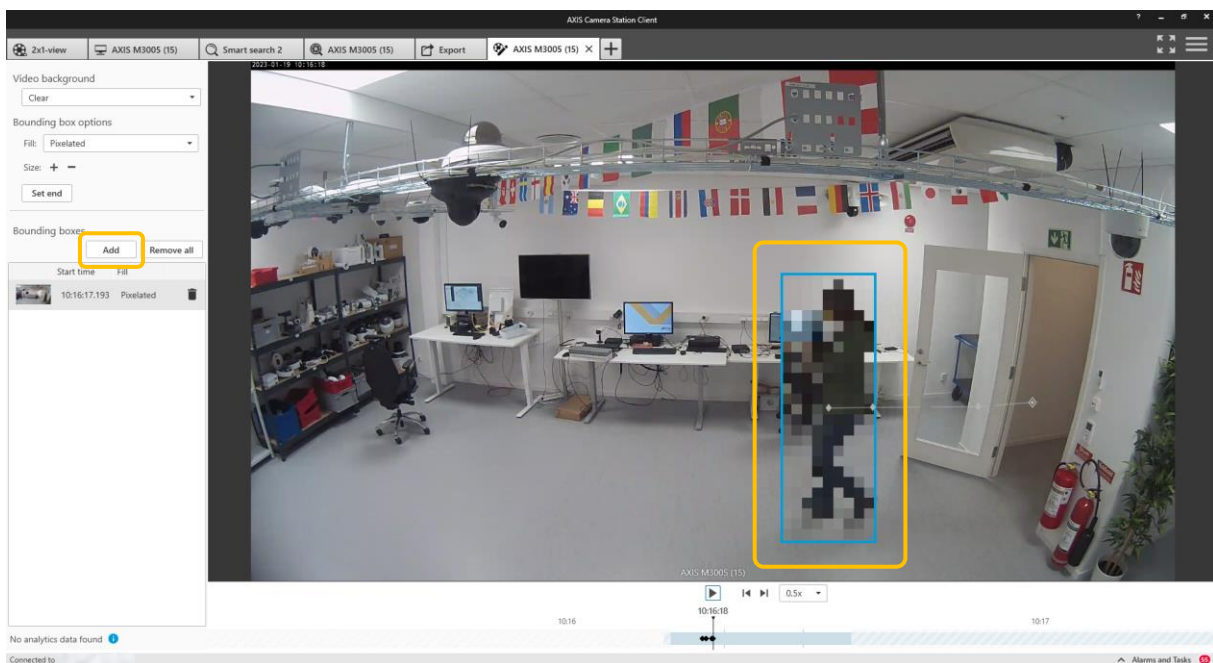
Notes (📄) can also be added to the video to describe why the video clip is of interest. This will be included in the final export.

## 8 Edit recording

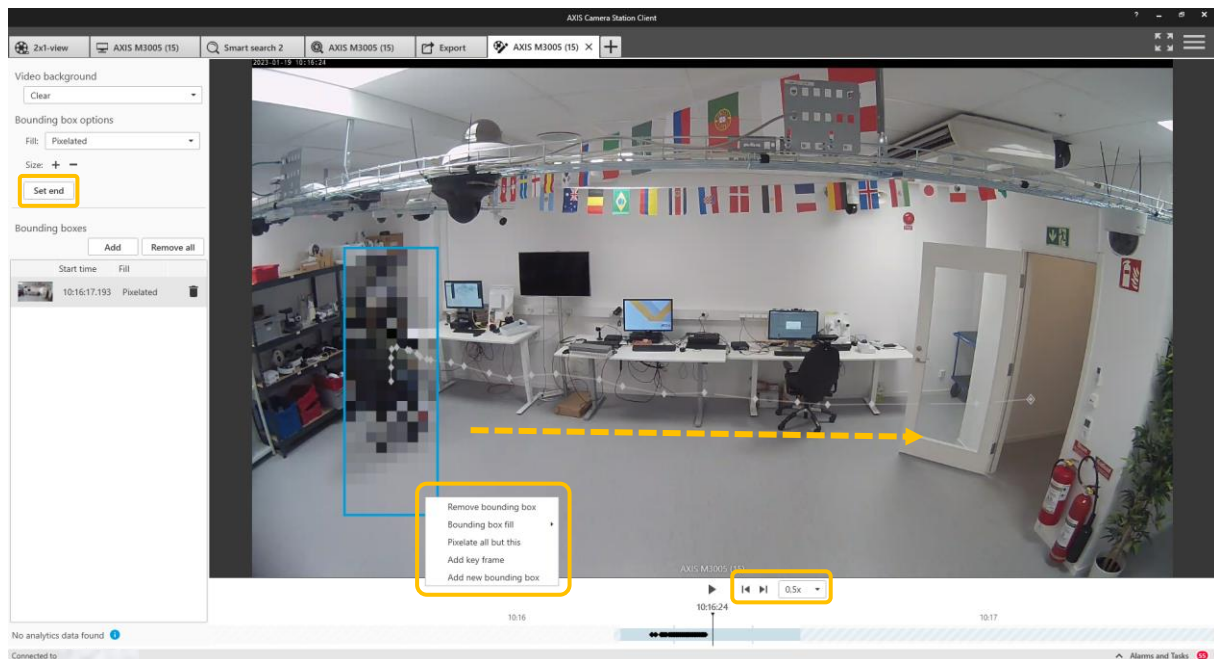
You can mask individual's identities using the edit recording function within AXIS Camera Station. There are different ways in applying masks but the simplest is described below. Note that masks can also be automatically generated by enabling analytics data in the stream profile when the solution is configured, but additional storage will be required by this data.

Within the Export tab click on the Edit recording icon (🔧). Here you can add different masks to the content and the background of the video.

The first step is to “Add a bounding box”. Select Add and mask will appear and can be moved to the required position.

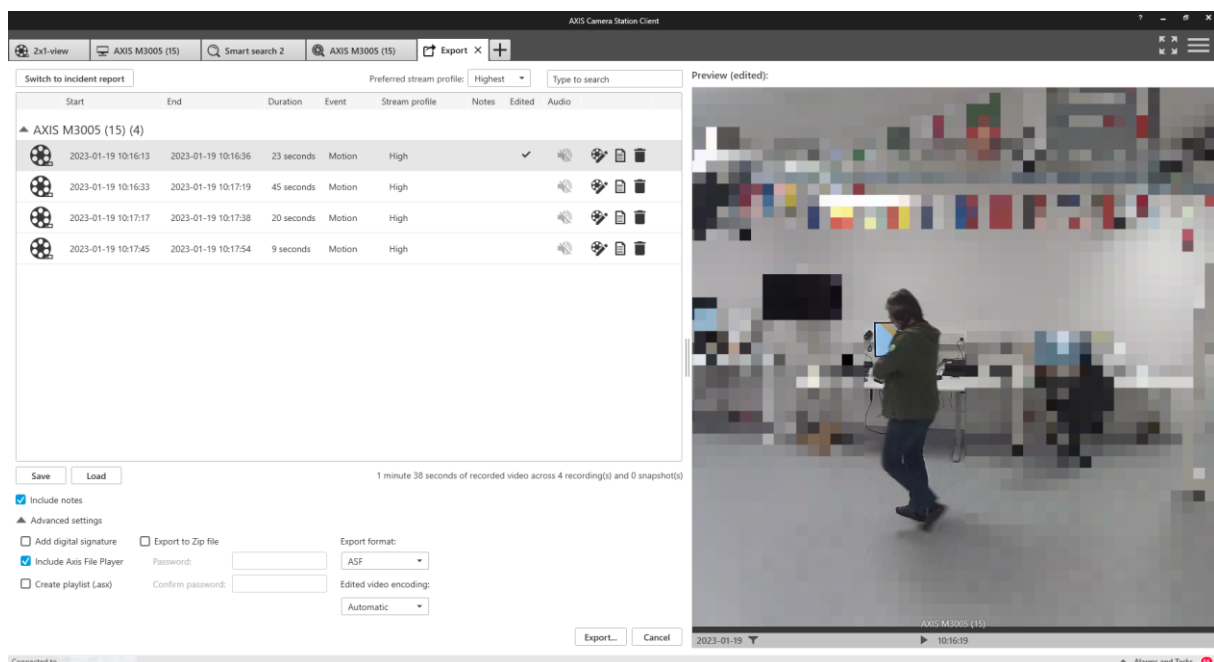


Next, slow the playback speed down and as the video plays move the mask to cover the subject (An alternative method to slowing down the play back speed is to use frame advance instead of pressing play).



This may take a little practice but it is quite simple once you get the hang of it. At the end press Set end. Note that multiple masks can be applied and the size of the mask can be changed. It is advisable to spend some time becoming comfortable with the function. You can also right click on the bounding box and choose to pixelate all but the bounding box.

Close the tab to return to the export. Here you can review your edit, in the viewing pane on the right hand side. Note you can zoom into the content using the mouse wheel.



Finally note that you are not editing the original footage but a copy. If an unedited recording is also required don't forget to export the unedited footage.

## 9 AXIS File Player

Once all the required clips have been added to the Export list you can export the video. There are several options:

- You can choose to include the Axis File Player which allows third parties to play back the video and view the associated notes.
- Create a playlist in .asx format used by Windows Media Player and the recordings will play in the order in which they were recorded.
- To ensure image authenticity and integrity by making image tampering impossible, select Add digital signature.
- Export to a password protected Zip file, select Export to Zip file.
- You can select in which video format you want the export to be provided, and which encoding is used on the edited video.

1 minute 38 seconds of recorded video across 4 recording(s) and 0 snapshot(s)

Include notes

▲ Advanced settings

Add digital signature
  Export to Zip file

Export format:

Include Axis File Player

Create playlist (.asx)

Edited video encoding:

When the video is exported a folder will be created with the video and the if selected AXIS file player which is used to play the video.

